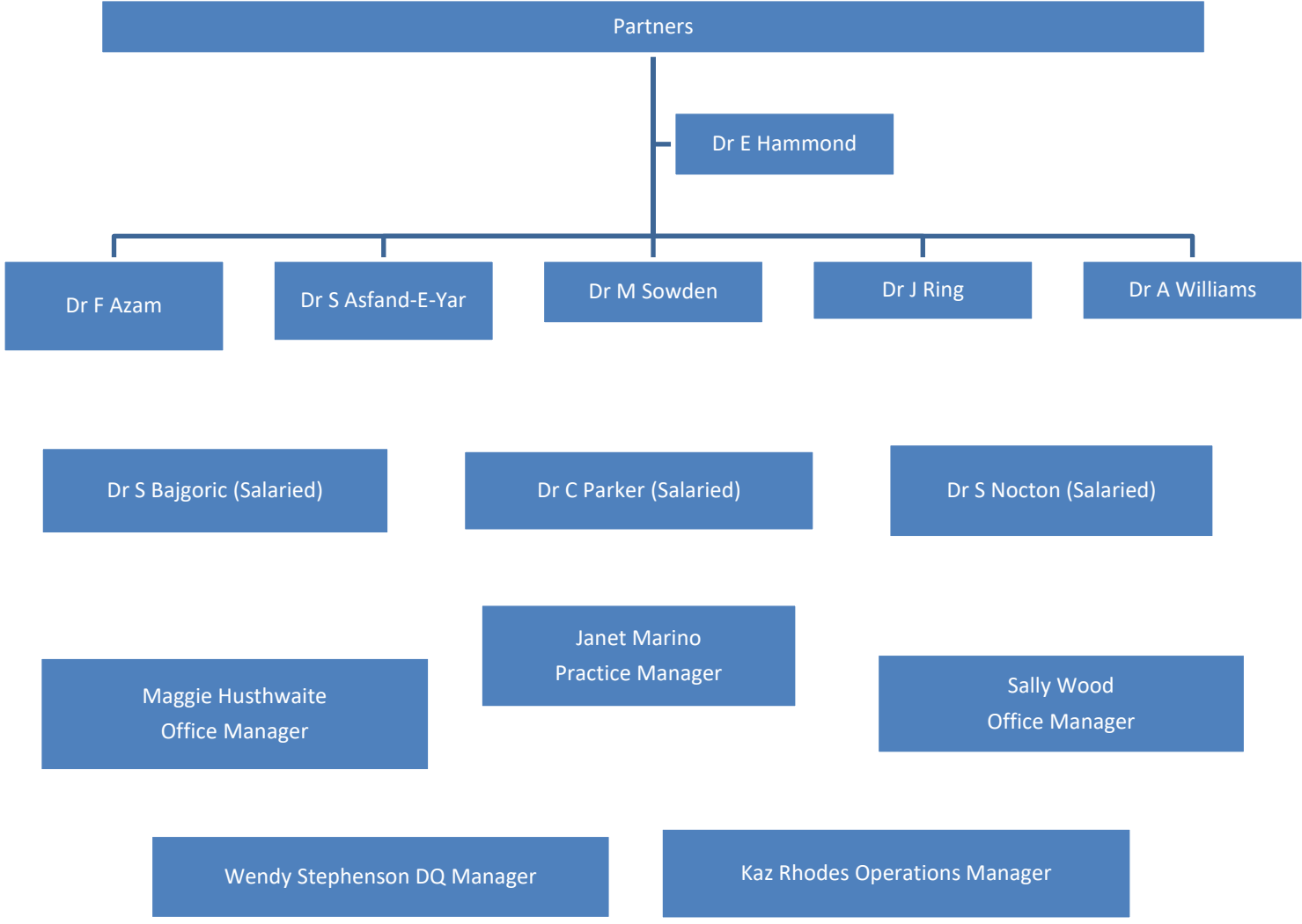


**Stainland Road Medical Centre 2024**

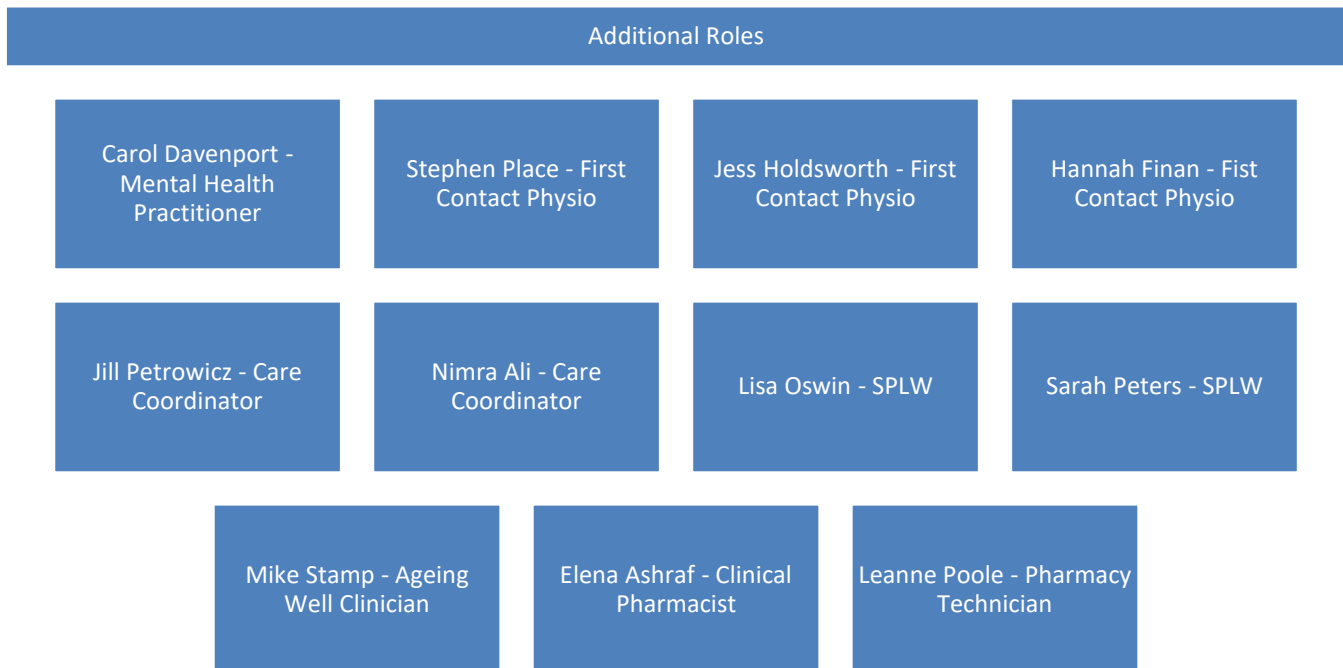


**Nursing Team**

Nicola Ollershaw ANP	Lyndsey McLaughlin ANP	Alisha Wilson Trainee ANP
Jackie Findlater Practice Nurse	Anthony Walters Charge Nurse	Stephanie Pace Trainee Practice Nurse
Debbie Brook Practice Nurse	Sandra Ruane HCA	Rebecca Lund Phlebotomist

Stainland Road Medical Centre (SRMC) is part of the Calder & Ryburn PCN (Primary Care Network).

The PCN is a group of 4 GP surgeries collaboratively working together to provide a greater provision of proactive and personalised care within the local community and affords the practice the following additional roles in-house;



To learn more about these additional roles, please visit the Calder & Ryburn PCN website: [www.calderryburnpcn.co.uk](http://www.calderryburnpcn.co.uk) or the practice website [www.stainlandroadmedicalcentre](http://www.stainlandroadmedicalcentre) where you will also find our latest news items.

In addition to the clinical staff mentioned, we are proud to say we are an established GP Training Practice.

This means we are involved in training the GP's of the future.

### **GP Registrar Training**

The practice will have attached to it qualified Doctors training to specialise in General Practice and each doctor will remain with us for a period usually between 6 – 12 months. You may therefore be offered an appointment with the GP Registrar. By the time you see a GP registrar they will have spent at least 5 years at medical school to qualify as a doctor. Then they will have done 2 years working in hospitals (previously known as "house jobs". They will then start a 3 year training

programme to become a GP, during which they will spend 18 months in a training practice. So by the time you see this doctor they may well have been working as a doctor for 4 years.

At any time if you do not wish to be seen by a GP registrar at your consultation please feel free to bring this to the attention of the receptionist or GP. At no time will this decision prejudice your care with us.

Our current GP Registrars are:

Dr Inderjeet Singh (M)

Dr Sania Ali (F)

Dr Atif Khan (M)

Dr Akpoufuoma Edafe (M)

Dr Anuoluwapo Ibitoye (F)

### **Medical Students**

We are also closely aligned to Leeds University & the University of Central Lancashire and host Year 3 and Year 5 medical students as part of their placements in practice. Again, you may be offered an appointment with a student under the supervision of a GP.

### **Triage/Appointments**

Our reception team have been trained in care navigation (also referred to as triage).

Care navigation is a way for general practice staff to ensure patients are being directed to the most appropriate course of care. The team have been trained to help patients get the right help from the right place, at the right time.

They can direct patients to the best member of the practice healthcare team to deal with medical issues and the most appropriate service for any other support they might need.

What are the benefits for patients?

Patients are more likely to see the right person the first time and may be seen sooner than they would have done if they were to see a GP. Care navigation allows patients to better understand their options and increases patient choice through a two way conversation with the receptionist.

By linking patients with the most appropriate care, our receptionists can help to reduce the number of avoidable GP appointments releasing GP appointments for those patients most in need. Linking patients with other members of the practice team also results in reduced patient waiting times and faster access to care for patients.

Whilst it can look like the waiting room is empty at times, please be assured that we are working incredibly hard as a practice to keep up with demand. We offer a combination of face-face appointments and telephone appointments, as well as E-Consultations.

During the month of January 2024, we carried out over 7000 appointments.