

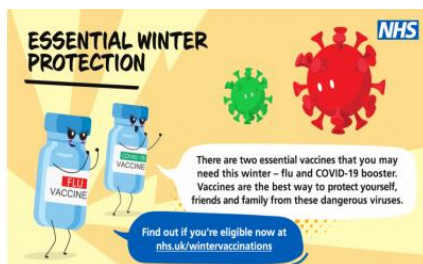


Welcome to our newsletter, providing updates within the surgery and information on services that we hope you will find useful.

Have your say in what we publish by sending your suggestions to us at: [priory.view@nhs.net](mailto:priory.view@nhs.net)

## Autumn Covid and Flu Vaccines

This Autumn we will be inviting patients who are eligible to receive their Covid-19 booster and annual Flu vaccination to have both vaccines together, during one appointment, where stock deliveries allow. Hopefully most patients will find this convenient. If, however, by the time of the appointment anything has changed, or patients only want one of the vaccines then we will just give which one is needed.



The primary aim of the autumn booster programme is to increase immunity in those at higher risk of severe Covid-19 and Flu during winter and we will be contacting patients who are eligible in order of priority as specified by the Department of Health. Most invites will be sent via a text message, enabling eligible patients to book

themselves into one of the available time slots.

## Patient Survey 2022

This summer we asked patients that visited the surgery between 25<sup>th</sup> – 30<sup>th</sup> July for their feedback on the service they received. We were particularly interested to understand how our patients access the various online services we have available.

Based on feedback from the 122 patients who responded to our survey, we are looking to raise awareness of the online services available and to help patients who might not feel confident using them by producing an easy 'how to' guide as well as having staff on-hand to offer support.

The survey results can be viewed on our website or in the notice board next to our Reception desk.

## Patient records to be digitised

You may be aware of the project to digitise all historic paper-based patient medical records (commonly known as 'Lloyd George' medical records).

As you can imagine this will be quite an undertaking for GP surgeries, and we will be adhering to strict data protection guidelines.

We are still waiting to hear when this process will start at Priory View and will update patients once we have more detailed information.

## Social Prescribing News

We would like to extend a very warm welcome to Mark Kelly and Charlotte Cuthbertson, who join our social prescribers Sinead and Aine and will be supporting patients across Priory View, Armley and Thornton surgeries.



Charlotte has a lot of experience of working with vulnerable adults. Before joining the team, Charlotte was a housing support worker helping people who had previously been homeless. Charlotte also spent six years supporting adults with learning difficulties and has a diploma in counselling. Charlotte is really looking forward to working with patients across all three surgeries.

Mark worked for the Police force for 13 years and, more recently, worked as a loss prevention manager in retail. Mark has first-hand experience of living with poor mental health and to help tackle this he took up training and competing in Strongman competitions. He uses his own social media accounts to talk openly about how he tries to improve his mental health and the good and bad days that he has.





Social Prescribers can offer advice, referrals, and signposting for patients around physical, social, and mental well-being. You can be referred by your GP or you can self-refer by calling our reception and asking for an appointment.

### Help with Fuel Costs from Care & Repair Leeds

If you are experiencing or are on the verge of fuel poverty, there is a fantastic scheme being run by Care and Repair Leeds in conjunction with Leeds City Council to help provide more convenient and less expensive means of cooking and heating.

They will help any household with an income of less than £21k and savings less than £16k and:

- Who are over the age of 65; **or**
- Pregnant or living with dependent children under 18 years old; **or**
- Has a disability or long-term health condition; respiratory, diabetes, arthritis or enduring mental health condition

Eligible households will be visited at home by one of Care and Repairs support workers who will assess the home environment and recommend the provision of alternative methods of cooking and heating.

For more information, please call 0113 2406009 or email: enquiries@care-repair-leeds.org.uk

### Priory View voted no.1!



We are so pleased to have been rated joint 1<sup>st</sup> GP surgery in Leeds following an Ipsos survey sent to people in the LS post code earlier this year 😊.

### Priory View Team News

We are delighted to welcome Dr Ageni back to Priory View along with Dr Rahemtulla and Dr Zimri, who are all working with us as part of their GP training. Dr Ageni was with us earlier in the year and will be a friendly and familiar face to some of our patients. Dr Rahemtulla spent four months with us back in 2014, so some patients who have been with us for a while may remember him too! We hope they will all be very happy at Priory View.

This Autumn we say a sad goodbye to Dr Start, who has now finished her GP training and is leaving to take up a permanent position within another GP surgery. Dr Start has been with us for the past 18 months and we'll really miss her. Here's wishing Dr Start all the very best for the future.

### Patient Participation Group

Members from our PPG met at the end of July where they were given a general overview of the NHS and

General Practice and were asked for their feedback on the type of appointments and timings of clinics we offer.

All the minutes from our meetings can be viewed on our website under the 'Patient Participation Group' section. If you would like an idea of the topics we discuss at our meetings, please take a look.

If you would like to register your interest in joining the PPG please contact our reception.

### Opening times



#### Priory View

Monday	08:00 – 18:00
Tuesday	07:30 – 18:00
Wednesday	08:00 – 18:00
Thursday	07:30 – 18:00
Friday	08:00 – 18:00

Week-night evening telephone enquiries answered between 18:00 – 18:30.

From October the weekend 'Hub' service for our three surgeries (which is run from Priory View on behalf of Thornton, Armley and Priory View patients) is being updated – more information will follow.

### Training Days

Priory View will be closed from 12pm on 22<sup>nd</sup> September, 20<sup>th</sup> October & 24<sup>th</sup> November.

