

## Who can have the **Influenza (flu) vaccine?**

Child flu vaccine - NHS ([www.nhs.uk](http://www.nhs.uk))

PLEASE WAIT TO RECEIVE AN INVITATION BY TEXT.

The nasal spray flu vaccine is free on the NHS for the following children:

- From 6 months until 2 years (with long-term condition) will be invited to have this at the GP surgery
- **ALL children** aged from 2 years until child starts primary school will be invited to come to the GP surgery
- All children at primary school, and Year 7 to 11 secondary school —to have at school. If the child is not available the day that the school does these, parents need to liaise with the school nurses to re-book at a clinic in Leeds. We can't do any catch ups for these at the GP Surgery unless they are in an at risk group due to a long term condition or immunosuppressed household contacts.
- Children in school who ALSO have long-term condition will be invited to GP surgery.
- Home school children - to have at community clinic organised by the local authority.

### **Long-term conditions that qualify for the NHS flu vaccine include:**

- serious breathing problems, including those whose asthma requires a steroid inhaler or tablets
- serious heart conditions
- diabetes
- kidney or liver disease
- weakened immune system as a result of a condition or treatment with medicines such as steroid tablets or chemotherapy
- problems with the spleen, for example, sickle cell disease, or the spleen has been removed
- learning disability
- problems with the nervous system, such as cerebral palsy



## Who can have the **COVID 19 Autumn booster?**

Coronavirus (COVID-19) vaccine - NHS ([www.nhs.uk](http://www.nhs.uk))

COVID-19: A guide to the autumn booster ([publishing.service.gov.uk](http://publishing.service.gov.uk))



- persons aged 5 to 49 years in a clinical risk group (see back of this leaflet for details)
- persons aged 5 to 49 years who are household contacts of people with immunosuppression
- persons aged 16 to 49 years who are carers

## When and where will the Aire Valley clinics be?

PLEASE WAIT TO RECEIVE AN INVITATION BY TEXT.



Further details are yet to be given to us about specifically how the children will be invited in for their COVID vaccinations in Leeds, or which vaccine it will be.

Aire Valley Surgery will therefore go ahead and book patients in for just a FLU vaccinations for now at the surgery.

- It is possible that children may be invited for their COVID vaccines through the larger vaccination centres.
- We will keep patients updated via our website and via text as and when we are informed.

The childrens' FLU clinics will mainly be held on Monday afternoons and Friday afternoons at Aire Valley Surgery and a few Saturdays if possible. These will mainly be at our Yeadon site, within Silver Lane Surgery, Suffolk Court.

- These FLU clinics will start in the middle of September, and continue into October, November and December
- Both the nasal spray and the injection vaccines are likely to also be available until March 2023 if needed.

**PLEASE Do NOT contact the surgery to ask when you will be invited**, this blocks the phone lines for urgent callers. If you haven't been invited for your flu vaccine by Friday 28th October 2022, that's the time to get in touch with Aire Valley Surgery to ask.

**Table 4: Clinical and other risk groups for children and young people aged 5-15 years**

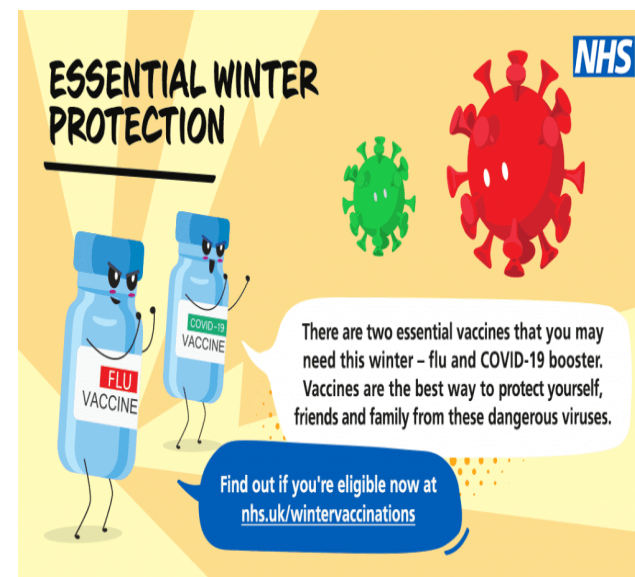
Chronic respiratory disease	Including those with poorly controlled asthma <sup>1</sup> that requires continuous or repeated use of systemic steroids or with previous exacerbations requiring hospital admission, cystic fibrosis, ciliary dyskinesias and bronchopulmonary dysplasia
Chronic heart conditions	Haemodynamically significant congenital and acquired heart disease, or less severe heart disease with other co-morbidity. This includes: <ul style="list-style-type: none"> <li>• single ventricle patients or those palliated with a Fontan (Total Cavopulmonary Connection) circulation</li> <li>• those with chronic cyanosis (oxygen saturations &lt;85% persistently)</li> <li>• patients with cardiomyopathy requiring medication</li> <li>• patients with congenital heart disease on medication to improve heart function</li> <li>• patients with pulmonary hypertension (high blood pressure in the lungs) requiring medication</li> </ul>
Chronic conditions of the kidney, liver or digestive system	Including those associated with congenital malformations of the organs, metabolic disorders and neoplasms, and conditions such as severe gastro-oesophageal reflux that may predispose to respiratory infection
Chronic neurological disease	This includes those with <ul style="list-style-type: none"> <li>• neuro-disability and/or neuromuscular disease that may occur as a result of conditions such as cerebral palsy, autism, epilepsy and muscular dystrophy</li> <li>• hereditary and degenerative disease of the nervous system or muscles, other conditions associated with hypoventilation</li> <li>• severe or profound and multiple learning disabilities (PMLD), Down's syndrome, including all those on the learning disability register</li> <li>• neoplasm of the brain</li> </ul>
Endocrine disorders	Including diabetes mellitus, Addison's and hypopituitary syndrome
Immunosuppression	Immunosuppression due to disease or treatment, including: <ul style="list-style-type: none"> <li>• those undergoing chemotherapy or radiotherapy, solid organ transplant recipients, bone marrow or stem cell transplant recipients</li> <li>• genetic disorders affecting the immune system (e.g. deficiencies of IRAK-4 or NEMO, complement disorder, SCID)</li> <li>• those with haematological malignancy, including leukaemia and lymphoma</li> <li>• those receiving immunosuppressive or immunomodulating biological therapy</li> <li>• those treated with or likely to be treated with high or moderate dose corticosteroids</li> <li>• those receiving any dose of non-biological oral immune modulating drugs e.g. methotrexate, azathioprine, 6-mercaptopurine or mycophenolate</li> <li>• those with auto-immune diseases who may require long term immunosuppressive treatments</li> </ul> <p>Children who are about to receive planned immunosuppressive therapy should be considered for vaccination prior to commencing therapy.</p>
Asplenia or dysfunction of the spleen	Including hereditary spherocytosis, homozygous sickle cell disease and thalassemia major
Serious genetic abnormalities that affect a number of systems	Including mitochondrial disease and chromosomal abnormalities
Pregnancy	All stages (first, second and third trimesters)

COVID-19 -  
SARS-Cov-2



# Flu and Covid Vaccine clinics for children

2022/2023 Season at Aire Valley Surgery.



Dr Elaine James, Dr Catrin Lewis, Dr Adrian Rees, Dr Sumana Reddy, Dr Chris Mills, Dr Jon Yardley

Aire Valley Surgery - Yeadon, 1 Suffolk Court, Yeadon, LS19 7JN,  
Aire Valley Surgery - Rawdon, 11 New Road Side, Rawdon, LS19 6DD,  
Telephone: 0113 2954234 <https://www.airevalleysurgery.nhs.uk>

<sup>1</sup> Poorly controlled asthma is defined as:

- ≥2 courses of oral corticosteroids in the preceding 24 months OR
- on maintenance oral corticosteroids OR
- ≥1 hospital admission for asthma in the preceding 24 months

<https://www.brit-thoracic.org.uk/covid-19/covid-19-information-for-the-respiratory-community/#jcvi-advice-on-covid-19-vaccination-for-children-aged-12-15-years-in-clinical-at-risk-groups>