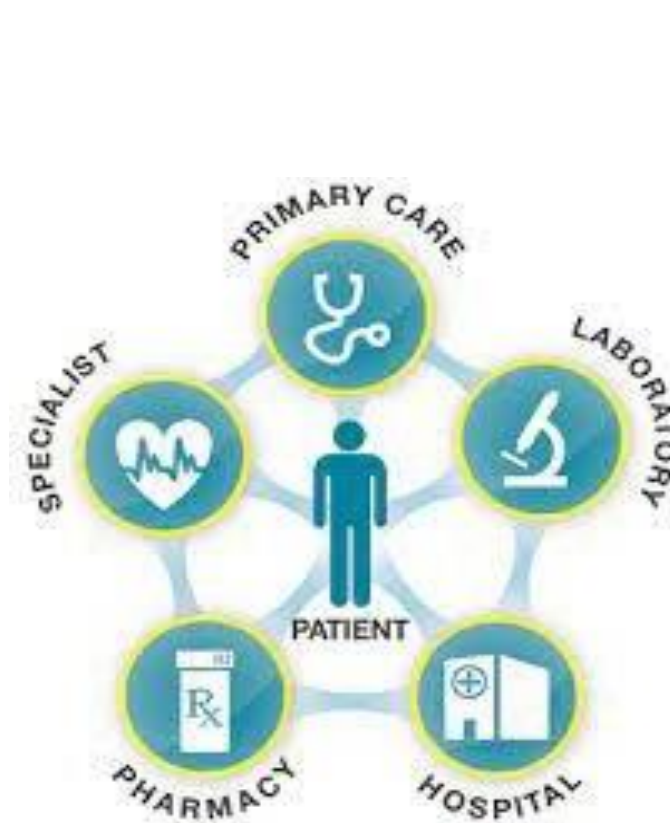


Service for: Patients age 65 and older



Meet our Care Coordinator!

A guide for patients about
the role of the Care Coordinator
at Aire Valley Surgery



GRACE

Dr Adrian Rees, Dr Catrin Lewis, Dr Chris Mills, Dr Sumana Reddy, Dr Jon Yardley.

Aire Valley Surgery - Yeadon, 1 Suffolk Court, Yeadon, LS19 7JN,
Aire Valley Surgery - Rawdon, 11 New Road Side, Rawdon, LS19 6DD,

Telephone: 0113 2954234

Care Coordinator

Here at Aire Valley Surgery, we have a Care Coordinator; Grace Clarke.



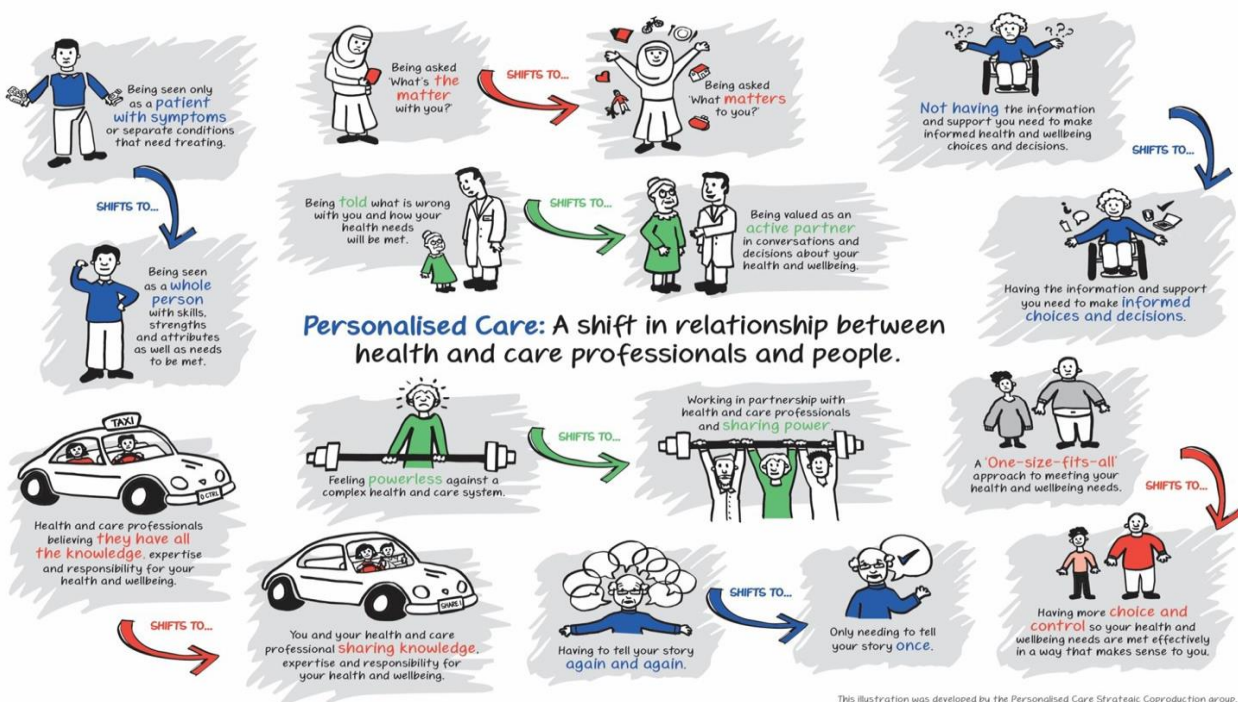
What is a Care Coordinator?

They work with patients to create a patient-centred care plan and provide access to support services within the area that are most appropriate for them.

Care coordinators also;

- help to co-ordinate and navigate care across the health and care system, helping
- people make the right connections, with the right teams at the right time
- helping people to live happier, healthier, and more independent lives
- Help to ensure a patient's changing needs are addressed
- provide time, capacity, and expertise to support people in preparing for or following-up clinical conversations they have.
- A single point of contact for patients and their families/carers to call should any issues arise
- Work alongside the social prescribing link workers and health and wellbeing
- coaches to enrich the skill mix of primary care teams
- Formulation of care plans to ensure all care is patient centred reflecting their
- wishes, future treatment, next of kin etc
- refer people to social prescribing link workers, health and wellbeing coaches, and other professionals where appropriate.

Our Care coordinator currently works with the over 65s (holistically supports patients with mild to severe frailty within the community), our long-term condition patients (Dementia) as well as our carers and their families.



Why is a Care Coordinator based in the GP surgery?

The Care Coordinator works closely with the whole team within the GP surgery. They work closely with the clinical staff to seek advice and guidance on different aspects of your care where necessary

Will I need to see the Care Coordinator on a regular basis?

It is important you feel that you can access the Care Coordinator whenever you feel the need. You may feel that one appointment is sufficient; however, if you have more longstand- ing issues, the Care Coordinator will support you while the issues are resolved.

If you are eligible for this service, over the coming months you may be contacted by one of our team, where we will arrange an appointment to talk with you or your family/carer either by telephone or in your home, however you can also self-refer. If you feel you would like fur- ther support, advice, guidance, or general information, then please contact the surgery and request a telephone consultation, face to face appointment at the surgery of preference or please do request a home visit if you feel this would better suit you and your needs with Grace Clarke - Care Coordinator.



Practice Addresses and Telephone Number

Aire Valley Surgery has two sites, but all patients are registered at both
and so can go to either at any time:

Rawdon Site - 11 New Roadside, Rawdon, Leeds, LS19 6DD

Yeadon Site - 1 Suffolk Court, Silver Lane, Yeadon, Leeds, LS19 7JN

Practice Telephone Number:
0113 295 4234

www.airevalleysurgery.nhs.uk