

How do you communicate?

Do you need information in a different format?

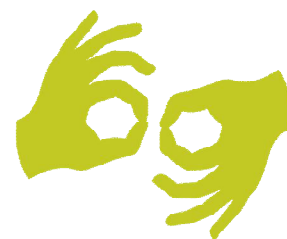
Do you need support?



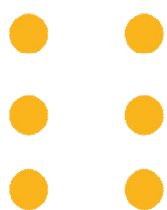
Easy read



Large print



BSL



Braille



**Email or
SMS text**



**Other
communication
support**

Tell us today

Telephone: 01332 667911

Email: SDERCCG.C81051-Reception@nhs.net

Project funded
by NHS England

**Accessible
Information
Standard**