

Inclusion for me as a female working in the Borough of Newham is about feeling valued, respected and being heard. To feel empowered as a local female leader to create positive changes for our residents of Newham and inspire others to understand the value of women's inclusion. Rima



#inspire inclusion

Inclusion to me gives everyone a voice. It's like embracing everyone like a long-lost friend. Maggie

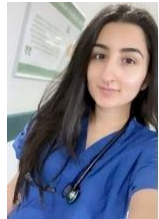


Inclusion is a key part of how I practice healthcare. As General Practitioners we listen carefully to our patient to fully understand their experiences and concerns. Transferring this approach into the way we work in all areas of healthcare is a vital part of our community of GPs and the wider primary care team. On international women's day I know my colleagues are working with a focus on inclusivity today and throughout the year." Arpana



As a woman in healthcare leadership, I feel that inclusion is one of our most important strengths in Newham. To me it means that we support each other to excel, rather than competing against each other. Celebrating our diversity and united in compassion- and this way everyone wins. Imrana

As a woman in leadership within the healthcare sector, originating from ethnic minority, working-class, and Muslim communities, International Women's Day holds profound importance for me. It's a time to honor the unwavering resilience, profound strength, and remarkable achievements of women from all walks of life!
Mariam



Inclusion, for me, entails being seen for who we are without censorship or judgment. As a woman in healthcare, I am privileged to serve as a role model, celebrating the achievements of those who came before me while making an impactful contribution to my community. Tammy



It means recognising, accepting, respecting and treating everyone fairly. Lina

It means understanding that we all have different needs, and a 'one-size-fits-all' approach may not work for everyone. Katherine



To be treated equally and feel valued. Antra



Including all voices in all our work is vital for our success in primary care. We often see inclusion as a 'nice to have' but for Newham Health Collaborative it is a key part of our success, and we know it is a strength in our approach. At NHC we are keen to hear from and include all voices across Newham. Karen



INTERNATIONAL WOMEN'S DAY 2024

#INSPIREINCLUSION

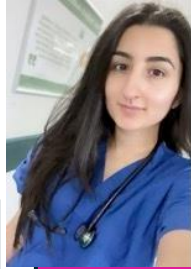
Newham Women leaders

#InspireInclusion #internationalwomensday2024



Inclusion is a key part of how I practice healthcare. As General Practitioners we listen carefully to our patient to fully understand their experiences and concerns. Transferring this approach into the way we work in all areas of healthcare is a vital part of our community of GPs and the wider primary care team. On international women's day I know my colleagues are working with a focus on inclusivity today and throughout the year.

Dr Arpana Patel



As a woman in leadership within the healthcare sector, originating from ethnic minority, working-class, and Muslim communities, International Women's Day holds profound importance for me. It's a time to honor the unwavering resilience, profound strength, and remarkable achievements of women from all walks of life!

*Marriam Haniff
Physician Associate*



Inclusion for me as a female working in the Borough of Newham is about feeling valued, respected and being heard. To feel empowered as a local female leader to create positive changes for our residents of Newham and inspire others to understand the value of women's inclusion.

Dr Rima Vaid



Inclusion, for me, entails being seen for who we are without censorship or judgment. As a woman in healthcare, I am privileged to serve as a role model, celebrating the achievements of those who came before me while making an impactful contribution to my community.

Dr Tammy Hibbert



As a woman in healthcare leadership, I feel that inclusion is one of our most important strengths in Newham. To me it means that we support each other to excel, rather than competing against each other. Celebrating our diversity and united in compassion- and this way everyone wins.

Dr Imrana Siddiqi

Newham Women leaders

#InspireInclusion #internationalwomensday2024



It means recognising, accepting, respecting and treating everyone fairly.

Lina Prichodka



Including all voices in all our work is vital for our success in primary care. We often see inclusion as a 'nice to have' but for Newham Health Collaborative it is a key part of our success, and we know it is a strength in our approach. At NHC we are keen to hear from and include all voices across Newham.

Karen Livingstone



Inclusion to me gives everyone a voice.

It's like embracing everyone like a long-lost friend.

Maggie Adesanya Cram



To be treated equally and feel valued.

Antra Koul



means understanding that we all have different needs, and a 'one-size-fits-all' approach may not work for everyone.

Katherine Wan