

HOW TO TAKE PHOTOS OF YOUR RASH

Please take 3 photos of your rash by following these steps and ensure the photos are **very clear**.

1

Find a plain background

2

Find a place with good lighting (natural light is best) and turn on the flash if needed

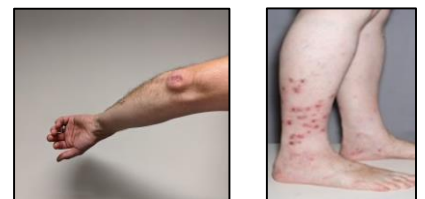
3

Enable auto focus - getting too close to the skin may result in a lack of focus

4

Then take 3 photos of your rash:

One photo 1 - 1.5 metres away from the rash so your GP can 'locate' and see where the rash is on your body

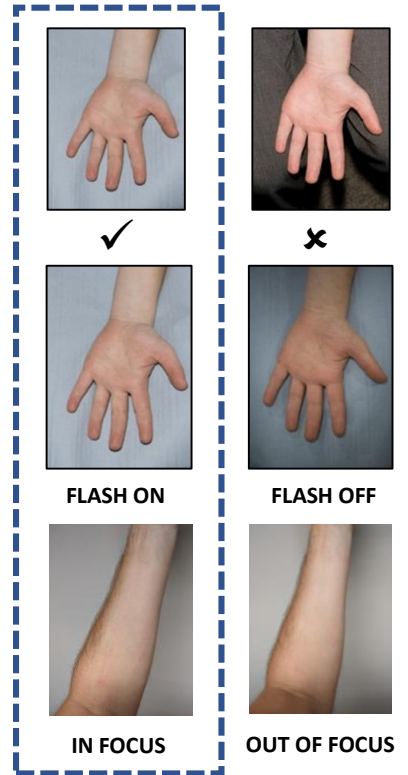


LOCATING IMAGE

Two 'close up' photos 30 cm away from the rash so your GP can see your rash in detail



CLOSE-UP IMAGES



5

Ensure the size of the photo is no bigger than 5MB and send your 3 photos back to your GP by text.