



Welcome To Your GP Surgery

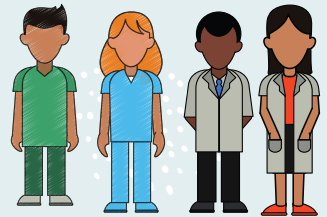


How to contact us

You can contact us online via our website or if you will find this difficult you can contact us via telephone to make an appointment. Please let us know if you need an interpreter.

Who you can see at the GP surgery

We may book you an appointment with our doctors and nurses but you might be given an appointment with a professional better suited to your needs such as physiotherapists, physician associates, social prescribers, mental health workers, health and wellbeing coaches and pharmacists. We are all here to help you!



NHS Health Checks

The NHS Health Check is a health check-up for adults in England aged 40 to 74 every 5 years. It's designed to spot early signs of kidney disease, heart disease, type 2 diabetes, dementia or risk of stroke. Please contact reception to see if we can book this for you.

Primary Care Networks

Your GP Surgery is part of Hackney Marshes PCN (primary care network). This is made up of a group of practices who work together for better healthcare. It is made up of the GP practices below:

Athena Medical Centre <https://www.athenamedicalcentre.co.uk/>

Latimer Health Centre <https://www.latimerhealthcentre.nhs.uk/>

Lower Clapton Group Practice <https://www.lowerclapton.nhs.uk/>

Kingsmead Health Centre <https://www.kingsmeadhealthcare.co.uk/>

The Lea Surgery <https://www.leasurgery.co.uk/>



Cancer Screening

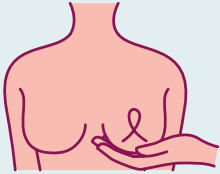
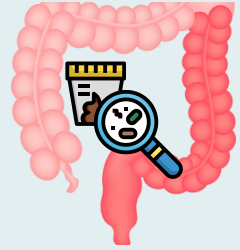
The UK has 3 Cancer Screening Programmes

Bowel Cancer Screening

Who - Everyone aged 60-74 (slowly being extended to those aged 50-59)

When - Every 2 years, you will get the result in the post

What - Bowel screening kit through the post (ensure we have your correct address) – you collect a small sample of your poo and post it back



Breast Cancer Screening

Who - Women aged 50-70, also for some trans or non-binary people

When – Every 3 years you will be sent a letter invite to attend a screening centre, you will get the result in the post

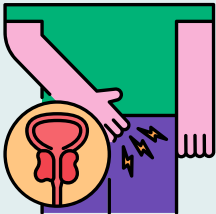
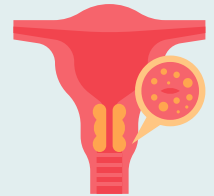
What – Mammogram (x-ray of your breasts)

Cervical Cancer Screening

Who - Women aged 25-64, also for some trans or non-binary people

When - Every 3 years for 25-49. Every 5 years 50-64, you will be reminded by post, you will get the result in the post

What - A smear test where we gently brush cells from the cervix. You should book for this at the GP surgery



Prostate Cancer

There is no screening programme for prostate cancer but you can speak to us about having a PSA blood test to help check for this if:

- you are aged 50 or older
- you are aged over 45 and have a family history of prostate cancer
- black men aged over 45

Please ask us if you would like more information about cancer screening or you can find more information here

<https://www.cancerresearchuk.org/about-cancer/screening>

Think you might be at risk of a Sexually Transmitted Infection (STI)?

Chlamydia screening Under 25 year olds

Anyone sexually active under 25 years old can have a free confidential chlamydia test.

- Contact us for your direct link to Sexual Health London (SHL) or ask for a test at your surgery.
- Male = urine test
- Female = swab test



STI screening without symptoms

- Contact us for your direct link to Sexual Health London (SHL) or ask for a test at your surgery.
- Male = urine test
- Female = swab test

Other Screening

Latent TB

Are you new to the UK? You could be at risk of latent TB. You may also be at risk if you have spent time in prison, used drugs, have been homeless or use alcohol to excess.

- Contact us for screening via a small blood test.



HIV

- Are you new to the UK? We offer HIV testing for all patients.
- Some patients may be more at risk, so you may be requested to have the blood test routinely.

Please ask us if you would like more information about screening