

## PG at SHGP

### PATIENT FORUM MEETING

23 OCTOBER 2019

10:30 – 12:00



# MINUTES

#### ATTENDEES:

CO-CHAIRS: Graham Syme, Fraser Syme

PRACTICE SUPPORT: Viliam Holicka

GUESTS: none

PATIENT ATTENDANCE: 15

ITEM	DESCRIPTION	ACTION POINT
1.	<b>WELCOME &amp; REGISTRATION</b> Co-Chairs, GS and FS welcomed the participants and opened the meeting with handing out the agenda of items to be discussed.	
2.	<b>APPROVAL OF MINUTES</b> The preparation and distribution of minutes is still outstanding, largely due to the lack of a volunteer to accept the Minute Secretary role meaning this task also falls upon the co-Chairs.	
3.	<b>INTRODUCTION TO NEW PATIENT GROUP STRUCTURE</b> Co-Chair, GS, welcome the attendees and briefly covered the structure and intended goals of the Patient Group, as outlined on the back of the agenda.	
4.	<b>REGISTRATION AND GDPR FOR NEW ATTENDEES</b> All new attendees completed the registration forms, giving permission to be contacted directly by the Patient Group.	
5.	<b>OVERVIEW OF PCNS (PRIMARY CARE NETWORKS) &amp; QUESTIONS</b> Co-Chair, FS, discussed the <a href="#">formation of PCNs</a> using the handout entitled <b>Primary Care Networks – Lambeth</b> .	
6.	<b>OVERVIEW OF SEL ICS (INTEGRATED CARE SYSTEMS) &amp; QUESTIONS</b> FS, discussed issues surrounding the merger/amalgamation of the Lambeth CCG (Clinical Commissioning Group) into the new, super-CCG using the handout entitled <a href="#">NHS England » South East London STP</a> . FS also pointed out that in this matter, we are considered part of <a href="#">South East</a> London!	

## 7. SURGERY CONNECT - OVERVIEW & QUESTIONS

Practice Manager, VH, discussed implementation of the new telephone system, Surgery Connect, which is due to go live on Monday 16<sup>th</sup> December 2019. VH also discussed the possibility of this package being rolled out amongst other surgeries in the PCN.

## 8. PROGRESS OF THE PATIENT GROUP: DISCUSSION

FS discussed the progress of the Patient Group over the last 12 months.

## 9. HAVE YOUR SAY! ISSUES, PROBLEMS, SUGGESTIONS!

The forum was open for questions from the audience.

## 11. A.O.B

- Keeping Warm In Winter 2019  
FS reminded all present that it was important to [keep warm in winter](#). FS asked that attendees present share the info with their family, relatives, friends & acquaintances to ensure that those older and/or more vulnerable (including any potentially socially isolated) are being looked after. FS reminded all that approx 10% of the body's heat is lost through our heads. A range of measures we briefly touched to assist included: wearing woolly/fleecy hats; wearing scarves; layering-up clothing e.g. wearing t-shirt, shirt/blouse, sweater/cardigan, fleece & jacket/coat in the extremely cold weather when outdoors. FS also mentioned for people who may have problems with heating costs, the layered-clothing system for indoors applied too. Additionally, old ski jackets or fleece blanket can be used when sitting watching TV etc. FS also commented that for anyone really cold in bed at night perhaps using a sleeping bag under the duvet/blanket was another way to layer-up in bed. Finally, FS said that to help keep those who feel the cold most warm in bed at night, wearing a woolly/fleecy hat might help a great deal.
- Terms of Reference  
GS mentioned the objective of attaining charity status for the Patient Group and highlighted some hurdles in achieving that objective.
- Structure of PF Meetings  
GS mentioned this is open to discussion because the objective is to meet the requirement of the members.
- GS reiterated the commitment for the Patient Group Steering Committee being as inclusive as possible and requested that more people consider joining in to help shape our activities.

- 
- Date of next meeting: Wednesday 11<sup>th</sup> December 2019 @ 10:30hrs (TO BE CONFIRMED)

#### **ATTACHMENTS**

- 2019-10-23 PF Meeting Agenda
- Primary Care Networks – Lambeth
- NHS England » South East London STP.

# AGENDA

## PG at SHGP Patient Forum

### Meeting

**Date** 23 October 2019  
**Meeting to start** 10:30 Hrs  
**Venue** 4<sup>th</sup> Floor SHGP  
**Meeting to close** 12:00 Hrs

### Order of Business

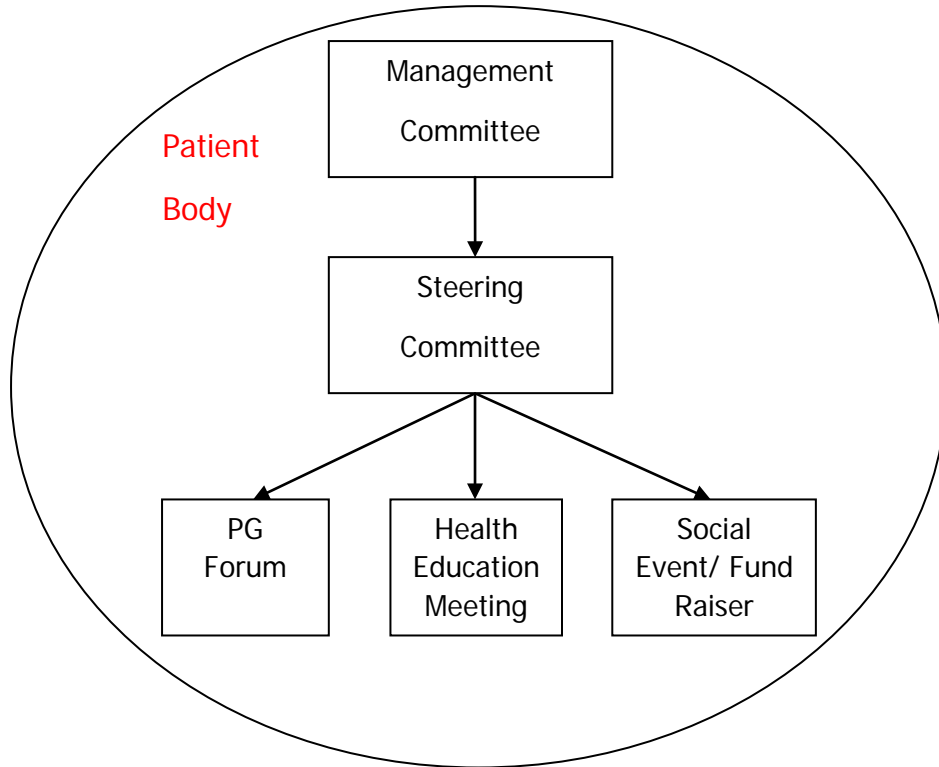
<u>Item</u>	<u>Description</u>	<u>Timing</u>	<u>Lead</u>
1	Welcome	1 mins	Chair (GS)
2	Introduction to new Patient Group structure (see reverse)	3 mins	Chair (GS)
3	Registration and GDPR for new attendees	5 mins	Chair +
4	<b>List items for discussion</b>		
4.1	Apologies	5 mins	Chair (GS)
4.2	Overview of PCNs (Primary Care Networks) & questions	10 mins	Chair (FS)
4.3	Overview of SEL ICS (Integrated Care Systems) & questions	10 mins	Chair (FS)
4.4	Guest Speaker – Viliam Holicka: Surgery Connect - X-on Overview & questions & AOB	20 mins	VH
4.5	Progress of the Patient Group: discussion	10 mins	Chair (FS)
4.6	Have Your Say! Issues, Problems, Suggestions!	10 mins	Chair (GS)
4.7			
4.8			
4.8			
4.9			
5	<b>Any Other Business</b> , including topics introduced by the chair/group		
5.1	Terms of Reference – revision for charitable status	1 mins	Chair (GS)
5.2	Structure of PF Meetings? Content, Frequency etc?	5 mins	Chair (GS)
5.2	Help shape activities with the Steering Committee	2 mins	Chair (GS)
5.3			
6	Date of next meeting: Wed 11 <sup>th</sup> December 2019 @ 10:30hrs	2 mins	Chair (FS)
7	Meeting to close by 12:00 hrs		

If you are unable to attend please contact: Fraser or Graham

.....

# PG at SHGP

## Patient Group Structure



# Primary Care Networks – Lambeth

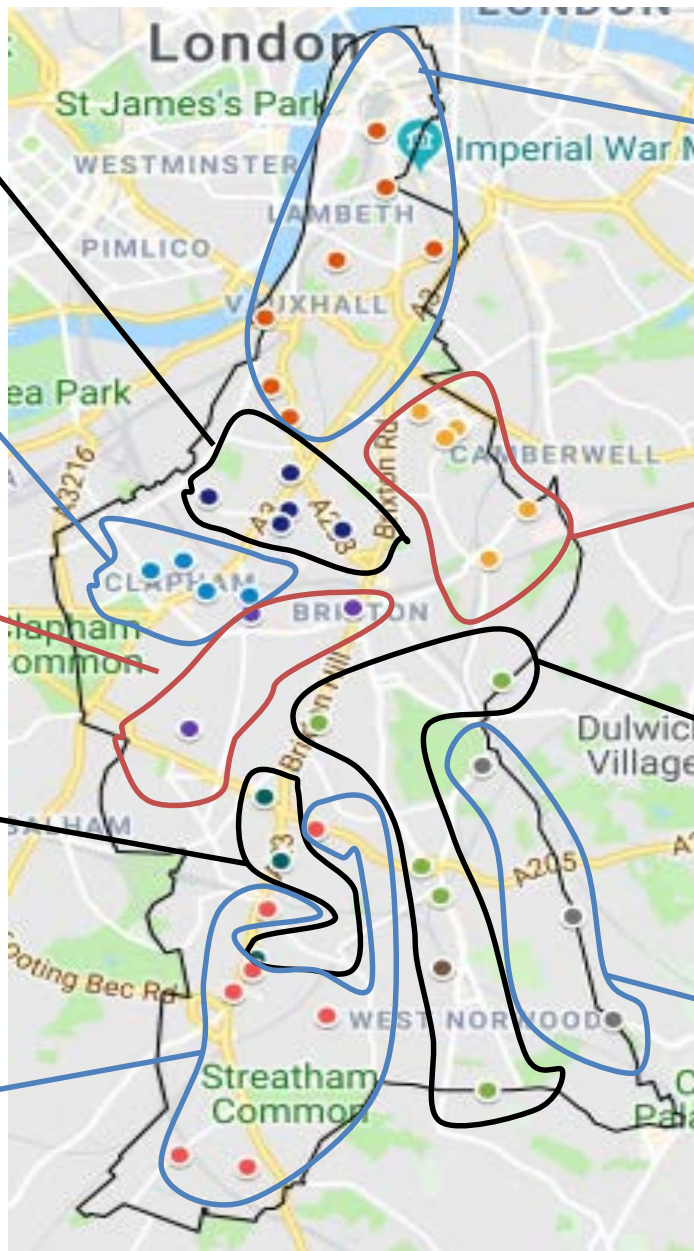
**The StockWellBeing PCN**  
Stockwell Group Practice  
Beckett House Practice  
Springfield Primary Care Centre  
The Grantham Practice  
Binfield Road Surgery  
**Clinical Director:** Dr Vikesh Sharma  
**List size:** 43,876

**The Clapham PCN**  
Sandmere Road Practice  
Clapham Family Practice  
Grafton Square Surgery  
Dr Curran & Partners  
**Clinical Director:** Dr Azhar Ala  
**List size:** 51,194

**The Brixton & Clapham Park PCN**  
Hetherington Group Practice  
Hetherington at the Pavilion  
Clapham Park Group Practice  
**Clinical Director:** Dr Jennie Parker  
**List size:** 34,328

**The AT Medics Streatham PCN**  
Streatham High Practice  
Streatham Place Surgery  
Edith Cavell Practice  
**Clinical Director:** Dr Tarek Radwan  
**List size:** 38,895

**The Streatham PCN**  
Streatham Common Group Practice  
Dr. Masterton's Surgery  
Palace Road Surgery  
Valley Road Surgery  
The Exchange Surgery  
The Streatham Hill Group Practice  
The Vale Surgery  
**Clinical Director:**  
Dr Emma Rowley-Conwy  
**List size:** 54,208



**The North Lambeth PCN**  
Hurley & Riverside Practices  
Lambeth Walk Group Practice  
Waterloo Health Centre  
The Vauxhall Surgery  
The South Lambeth Rd Practice  
Mawbey Group Practice  
**Clinical Director:** Dr George Verghese  
**List size:** 68,515

**The Fiveways PCN**  
Vassall Medical Centre  
The Corner Surgery  
Minet Green Health Practice  
Herne Hill Road Medical Practice  
Akerman Medical Practice  
**Clinical Director:** Dr Penelope Jarrett &  
Dr Suzanna Jefferson  
**List size:** 38,560

**The HBD Group PCN**  
Herne Hill Group Practice  
North Wood Group Practice  
The Deerbrook Surgery  
Brixton Hill Group Practice  
Knights Hill Surgery  
**Clinical Director:** Dr Sadru Kheraj  
**List size:** 57,863

**The Croxted PCN**  
The Old Dairy Health Centre  
Brockwell Park Surgery  
Paxton Green Group Practice  
**Clinical Director:** Dr Alex Mackay  
**List size:** 35,152



# NHS England » South East London STP

NHS England



**Region:** London  
**Population:** 1.9 million

Find out more about South East London sustainability and transformation partnership (STP) including details of its population size, constituent organisations and priorities.

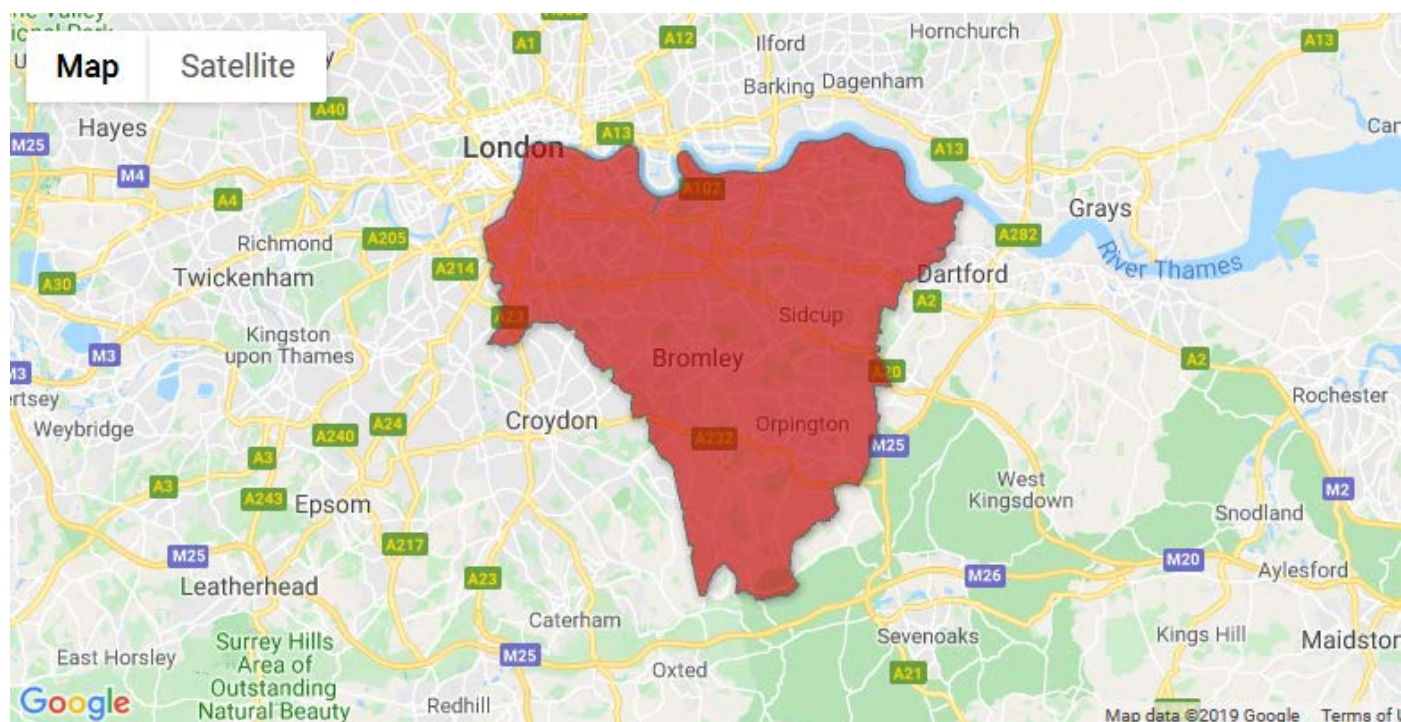
## Priorities

- Developing consistent and high quality community based care (CBC), primary care development and prevention. This includes promoting self-care, prevention and co-operative structures across parts of the system
- Improve quality and reducing variation across both physical and mental health. This includes better integration of mental health, and reducing the pressure on and simplifying urgent and emergency care
- Reducing cost through provider collaboration. This includes consolidation of some non-clinical support services, including pathology and finance back office
- Developing sustainable specialised services. This includes mental health collaboration, renal and cardiac work
- Changing how we work together to deliver transformation. This includes the development of integrated care systems and provider federations

[View the South East London STP plan](#)

## Which area does the STP cover?

The following map shows the area that South East London STP covers:



## Constituent organisations

The following organisations are part of South East London STP. For individual contact details for these organisations, please see the [NHS website](#).

- Bexley CCG
- Bromley CCG
- Greenwich CCG
- Guy's and St Thomas' NHS Foundation Trust
- King's College Hospital NHS Foundation Trust
- Lambeth CCG
- Lewisham and Greenwich NHS Trust
- Lewisham CCG
- Oxleas NHS Foundation Trust
- South London and Maudsley NHS Foundation Trust
- Southwark CCG

## Contact South East London STP

**STP leader:** Andrew Bland (Accountable Officer, Bexley, Bromley, Greenwich, Lewisham and Southwark Clinical Commissioning Groups (CCGs))

**Email:** [ourhealthiersel@nhs.net](mailto:ourhealthiersel@nhs.net)