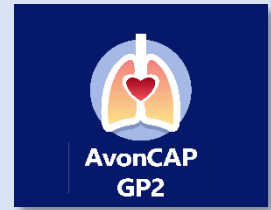




# AvonCAP GP2 Study News

December 2022 Issue 1  
Online Issue



**1016 taking part  
across all GP  
practices**

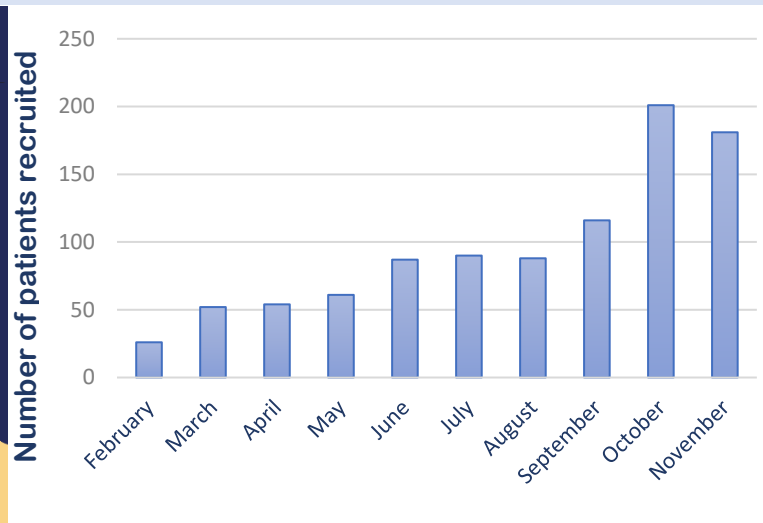
**GP practice start date and  
number of patients  
enrolled at each site**

Concord Medical Centre (started 16/02/2022)	<b>272</b>
Courtside Surgery (started 30/05/2022)	<b>208</b>
Montpelier Health Centre (started 16/08/2022)	<b>35</b>
Pioneer Medical Group (started 15/02/2022)	<b>272</b>
Tyntesfield Medical Group (started 05/06/2022)	<b>182</b>
Wellspring Surgery (started 16/08/2022)	<b>47</b>

**Welcome to our first edition of the AvonCAP GP2 Newsletter! Here we update everyone with news and progress with the study.**



## Recruitment across all GP practices

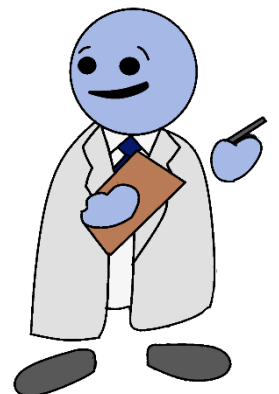


## Benefits of the study

**We are collecting LOTS of information about chest infections. This will help us to understand more about infections that might be prevented by new vaccinations.**

**Everyone who provides samples for the study is given a £20 Love2Shop voucher to say THANK YOU! You will also receive an ADDITIONAL £20 for completing a symptom diary, and £10 for every follow-up diary completed!**

**People can take part in the study MORE THAN ONCE. The study is running until July 2023 and some people will have more than one chest infection (or other qualifying illness) during this time. If you have a NEW chest infection and would like to take part again, please contact the study team.**



**Tel: 01454 550770**  
Concord Medical Centre  
bnssg.avoncapgp.concord@nhs.net

**Courtside Surgery**  
bnssg.avoncapgp.courtside@nhs.net

**Montpelier Health Centre**  
bnssg.avoncapgp.montpelier@nhs.net

**Wellspring Surgery**  
bnssg.avoncapgp.wellspring@nhs.net

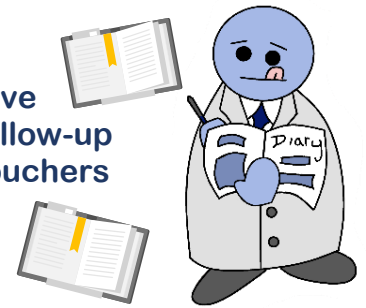
**Tel: 0117 958 1405**  
Pioneer Medical Group  
bnssg.avoncapgp.pmg@nhs.net

**Tyntesfield Medical Group**  
bnssg.avoncapgp.tmg@nhs.net

### Symptom/follow-up Diaries

Thank you to EVERYONE who has completed the symptom and follow-up diaries! 315 diaries have been completed in total.

If you finish your symptom diary and still have symptoms, we would love you to fill out a follow-up diary. We will send you extra Love2Shop vouchers for this.



**AvonCAP GP2**  
Web: [AvonCAP GP2](#)

Explanation Video:  
[AvonCAP GP2 - YouTube](#)

#### AvonCAP GP2 Staff

**Chief Investigator**  
Prof Adam Finn

**Principal Investigators**  
Dr Ruth Mears  
Dr Polly Duncan

**Clinical Research Manager**  
Dr Sian Porter

### RSV season is here

RSV stands for 'Respiratory Syncytial Virus' - a type of virus that causes chest infections. It is more common in the Autumn and Winter. We will be offering people a chance to take part in an extra part of the study during 'RSV season', where they provide us with more samples. They will be given extra vouchers for this.

Repeat swab samples every 2 - 3 days for two weeks, then on day 21 and day 28.

### Say Hello to the team: Amelia

Amelia – Assistant Research Coordinator  
(Concord Medical Centre):

“My role involves building the database (where we keep the data), checking the data we collect, and taking consent from study participants. I work closely with the rest of the study team to make sure we keep patient data safe and secure. I occasionally see patients, collect their samples, and help with tasks like taking their blood pressures. I write newsletters too!”



Meet more of the team in future newsletters!

**A HUGE Thank you to all participants and staff who have contributed to the study!**  
**Research would not be possible without people like you!**

