



Coventry and Warwickshire
Integrated Care System

NHS

How we are using your information

Health and social care professionals across Coventry and Warwickshire are introducing two new electronic information systems to support with patient care, this document explains more about these systems.

They will be able to see your information and analyse it to make quicker and safer decisions about your healthcare.

You will automatically be opted into sharing your information onto these systems, but you have the **right to object at any time**.

This leaflet describes what this means for you as a local resident.

It includes:

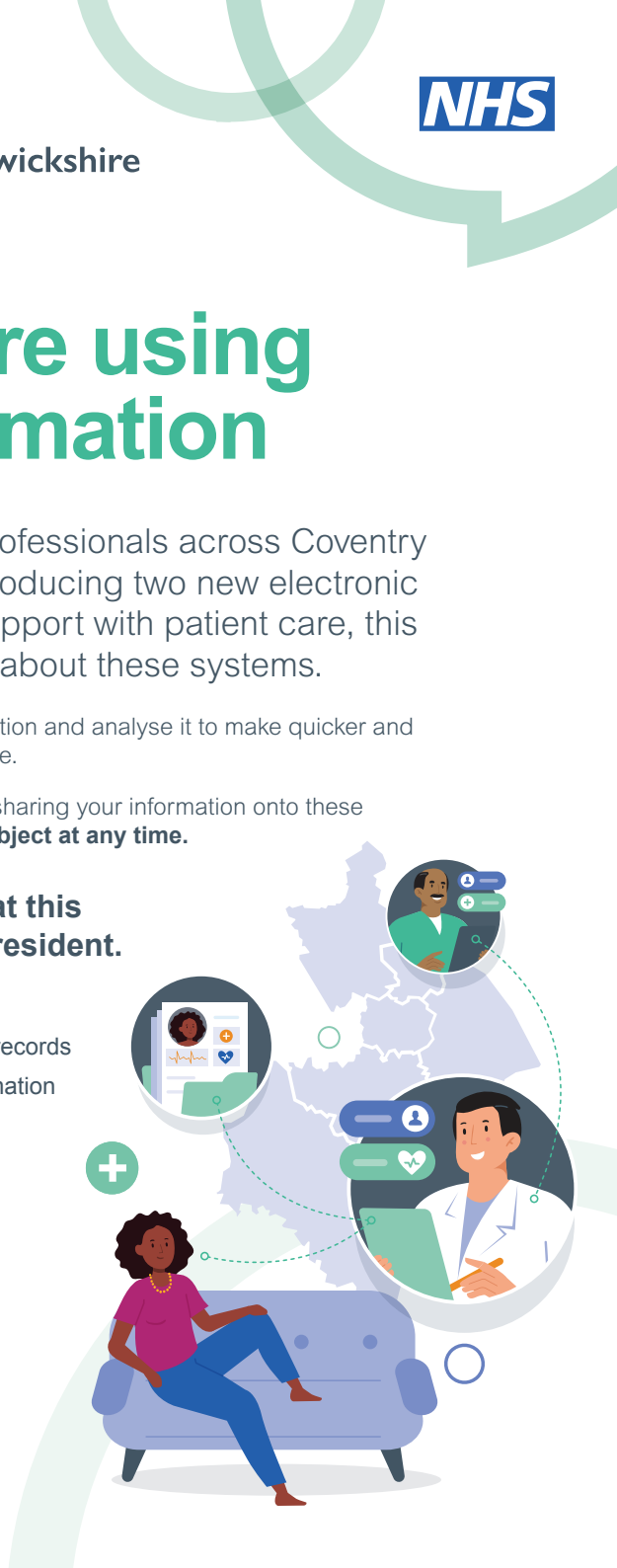
- How we are joining up your care records
- How we are analysing your information
- What you need to do



Integrated
Care Record



Population
Health
Management



How we are joining up your care records

We know that you only want to tell your story and share information once when receiving care from any health or social care organisation across Coventry and Warwickshire. That's why we've developed the Integrated Care Record (ICR).

The Integrated Care Record is a way of bringing together all your separate records from the different organisations involved in your health and social care. It's confidential and different to anything you might have heard of before. It will let health and social care professionals see relevant information about the care and treatment you've had across all services.

Health and social care professionals will be able to see your records through the Coventry and Warwickshire Integrated Care Record. Having a more joined-up view of your information will help them give you better, safer care.

The benefits to you include:

- Not having to repeat your details every time you have a different episode of care
- Better and potentially faster treatment due to health and care professionals having access to better information
- Reduction in potential medication errors through clinicians having access to your medication history (past and present)
- More effective treatment should you need care for COVID-19 due to fast access to information about any pre-existing conditions and your medications.

How we are analysing your information

A separate electronic information system will also be used to analyse your information. This helps healthcare professionals to build a better understanding of your health, the circumstances in which you live, your needs, and the type of care you receive. This is known as 'Population Health Management'.

The information will be collected from General Practice, hospitals, mental health providers, community services, social care, and other sources. This will include personal information about your care. Only health and social care staff who are involved in providing your care will be able to see your identifiable information.

What you need to do

You will automatically be opted into sharing your information onto these systems, but **you have the right to object at any time.**

You can choose to opt out of these systems by scanning the QR codes below for the system you are choosing to opt out from.

If you are happy for your personal information to be used across the health and social care system, then **you do not need to do anything further.**

If you need help, please email: **cwibc.cwphm@nhs.net**

If you would like this information in an alternative format (for instance, braille, audio, easy read or your spoken language) please contact a member of our team at the email address above.

Scan the QR code with your smartphone camera



Integrated
Care Record



Population Health
Management