



Age Friendly Wythenshawe

APRIL 2023 NEWSLETTER



Look out for the Easter bunny around
Wythenshawe in early April
Tree of life. Wythenshawe cricket club. Bideford centre.
Benchill committee centre. Peel hall park.

Great news for our local heritage!

In December, after 10 years in storage, the beautiful Tatton furniture finally came home, and when we opened for the first time this year on February 26th, we were able to show it in its rightful place. We kept it a secret, and to see the reaction from visitors was fantastic! Friends of Wythenshawe Hall are delighted to be able to present the hall with a combination of furniture which also features items on loan to us from the Davis Collection, which was created in the 19th century, along with a few reproduction pieces purchased by F.O.W.H. The pieces of original Tatton furniture were given to the Parks and Cemeteries Committee by RHG Tatton, in July 1926. He was the last owner of both Wythenshawe and Baguley Halls.

**SUNDAY 30TH
APRIL '23**

11AM 4PM

**WHO BUILT
WYTHENSHAW**

THE FORGOTTEN STORY OF
ERNEST & SHENA SIMON
AND THE CREATION OF
MANCHESTER'S GARDEN CITY

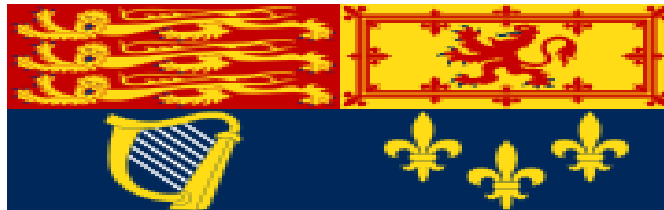
£2 Entrance fee

View the display telling the fascinating story of the people who bought and donated Wythenshawe Hall to the people of Manchester.

Under 10s Go Free

**WYTHENSHAW
HALL**





Don't forget the king's Coronation

Coronation Party

5th May 1:30 - 4pm

£8 Per person

Woodhouse Park Lifestyle Centre

All welcome

Buffet and Raffle



Lifestyle Reception 0161-436-0560



WATSOCC

The Watkin Society

Spreading the news about the amazing Edward and Absalom Watkin, two of the greatest reforming visionaries of 19th century Britain.

THE WATKIN WEEK

Celebrating the amazing Watkins and their impact on Victorian Manchester

Sun 16th April 2.00pm, Brongington Close Northenden M22 4ZQ
Public Walk from the Watkin Woods to St. Wilfrid's Church, followed by a short commemoration service.

Weds 19th April 7.00pm, Station South Levenshulme M19 3NP
Heritage Evening- Learn about 'The Man who built the Station and the Fallowfield Loop', followed by a relaxing drink in the bar.

Thurs 20th April 2.00 and 7.00pm,
Northenden Players Theatre Company M22 4NN
'The Watkin Story'- dramatic presentations from the theatre company and local schools.

Sat 22nd April 8.00pm, The Crown Inn Northenden M22 4WE
Fun and informative Quiz Night.

Sun 23rd April 2.00-5.00pm,
St. Wilfrid's Church Northenden M22 4WE
Open Day featuring Watkin-themed tours, archives, and research workshops.

Mon 24th April 6.00pm, Performance Space,
Manchester Central Library M2 5PD
Public Lecture- 'The Amazing Watkins: Manchester's Forgotten Stars'

• All are welcome!

• Free entry (except on 22nd)

• Free refreshments available (except on 19th and 22nd)



To find out more search "The Watkin Society"

Email: admin@watkinsociety.org.uk

Facebook: The Watkin Society

Twitter: @WatkinSociety



Made possible with
Heritage Fund



I took this one early evening with the rainbow above. Can you work out where it is. Clue super market and busy road.

To book tickets for the dramatic performances on Thurs 20th April please visit the Northenden Players website: www.northendenplayers.co.uk

MRS BEETON'S COOKERY

VEGETABLE PIE.

ENJOY

Stew 1 onion, 1 carrot, 1 stick ok of celery, a handful of green peas 1/2 oz of sago or tapioca. 1 oz of butter, pepper and salt a teaspoonful of flour together in a little water until they are three parts cooked. They should be cut into small pieces; then place them in a piedish, cover it with a crust like a meat pie and bake it until the crust is done. The pie may be made of any vegetables that are in season. A few mushrooms or mushroom powder will be found an improvement

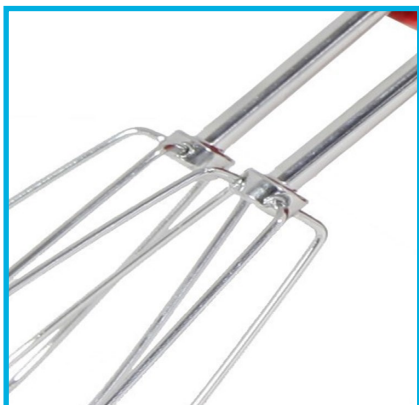


THIS MONTH'S QUIZ GUESS WHAT

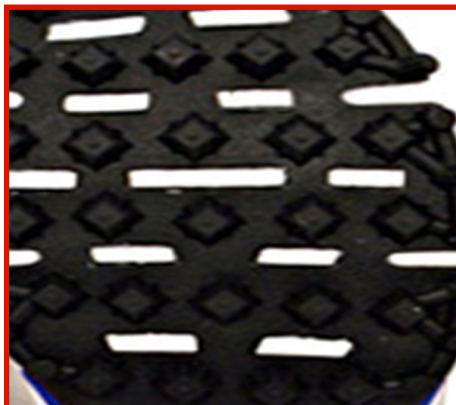


Answers to last month's quiz...

WHISK



SOLE OF A SHOE



LIGHT BULB



Contact details...fredleatherbarrow@yahoo.co.uk

Sumners, 433 Palatine Road,
Northenden,
Manchester, M22 4JS

Sumner's TV & Audio Specialist Centre is a family business that has been trading on the same location in Northenden, South Manchester since 1923. We pride ourselves on exceptional levels of service and have one of the widest ranges of premium quality audio and visual technology on display in the North West at our showroom.



Do you know any other businesses that are still trading in Wythenshawe or Northenden

I know that Threadgolds Cycles Hollyhedge are still trading well done.