

# Candidate Information Pack Health Care Assistant

October 2025



**GPS Healthcare**  
General Practice Solihull

To provide high quality primary care services which improve the health and social care outcomes for the population of Solihull

# Welcome to GPS Healthcare

I am really pleased that you are taking an interest in working with us at GPS Healthcare. I'm Simon Tunnicliffe, Managing Partner since 2022, and I am proud to lead this great organisation.

Working in primary care is both challenging and rewarding. GPS Healthcare is on a journey of transformation in respect of how we deliver services to our patients. This is an exciting time to join us and we're looking forward to bringing new people along with us.

**Our Vision matters:** to deliver safe, effective and culturally responsive healthcare services, empowering individuals to thrive and communities to flourish.

As a Health Care Assistant, you will be working alongside other fantastic team to deliver exceptional care to our patients. You will focus on supporting our patients to be healthy, assessing needs. You will work collaboratively with the general practice team to meet the needs of the patients and support the delivery of policy and procedures.

GPS Healthcare is a single practice PCN with six sites based in central/south Solihull. We are rated 'Good' by the CQC and collaborate with key stakeholders within the Integrated Care System to focus on local health needs and population health and improve the delivery of primary care services at a locality level.

Good luck with your application.

Simon Tunnicliffe  
Managing Partner



Simon Tunnicliffe  
Managing Partner

# Our Strategic Goals and Values:

## Our Strategic Goals:

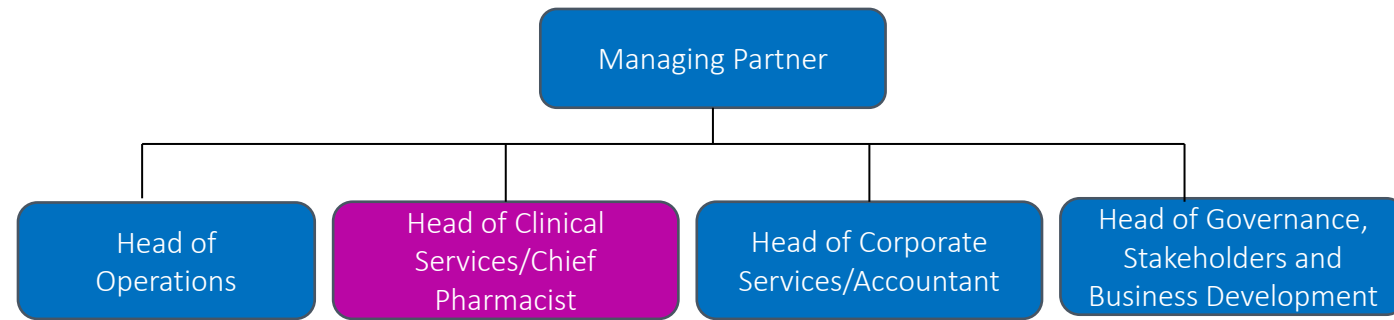
- Strengthen collaboration and communication.
- Develop proactive strategies to promote healthier lifestyles.
- Implement change based on feedback and evidence to meet established standards of excellence.

## Our Values:

- Care
- Agile
- Respect
- Efficient

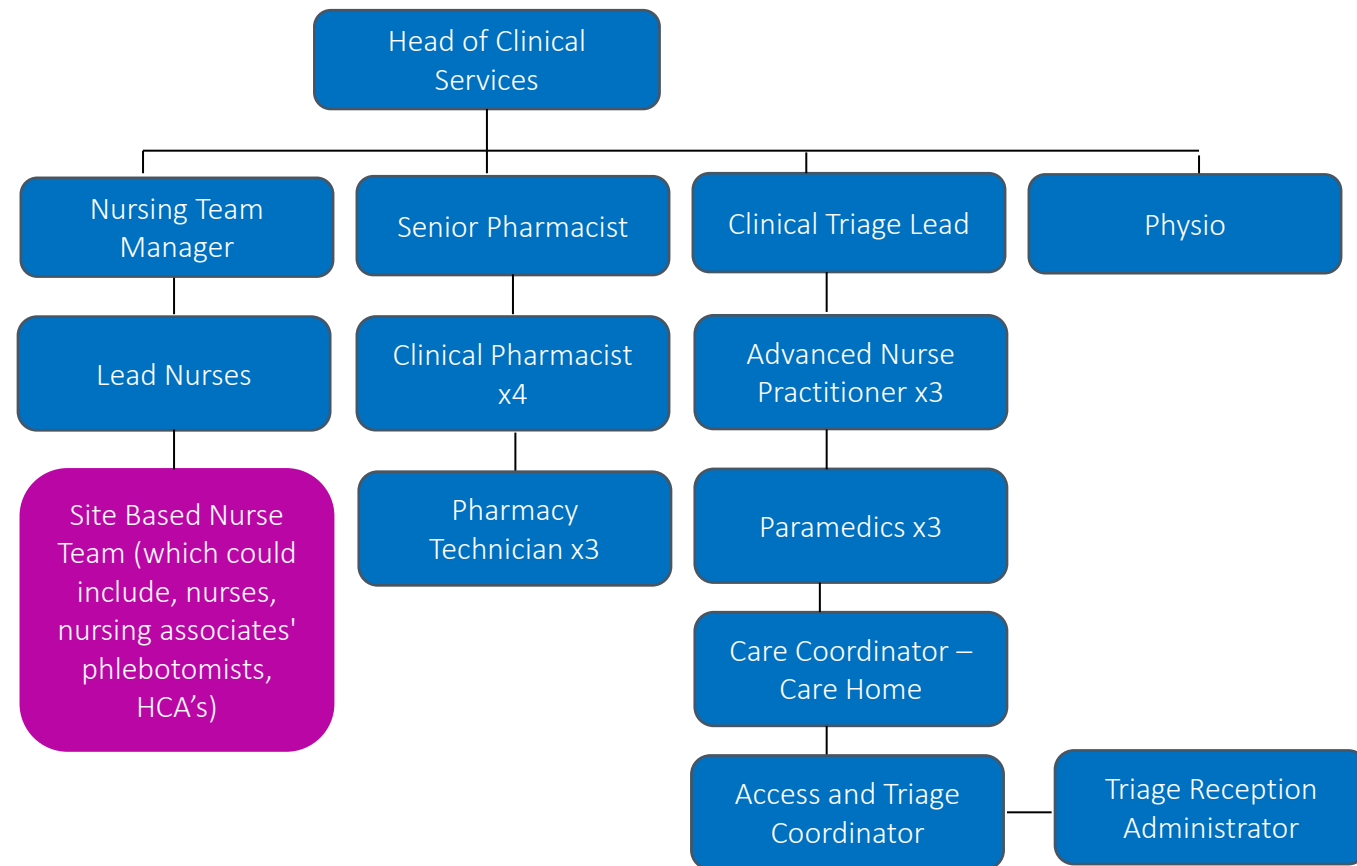
# Our Structure:

## Our Executive Team



# Our Structure:

## Our Clinical Services Team



# What we are looking for:

The HCA is responsible for the care delivered, demonstrating critical thinking and skills in clinical decision making within the parameters of their qualifications and role requirements.

The successful candidate will be able to:

- Participate in vaccination and immunisation programmes for adults under patient specific duration.
- Review patient data to work with the nursing team, to achieve focused patient healthcare.
- Active participation in achieving QOF and Enhanced Services targets and recall demands.
- Recognise adult and child safeguarding situations and act appropriately.

**Further information about the responsibilities of the role can be found in the full Health Care Assistant Job description.**

# What we can offer:

- An opportunity to join a forward thinking and innovative Primary Care Provider
- Competitive salary: £27,492 (£14.06ph) - £28,196 (£14.14ph) FTE – Dependent on experience
- Flexible working options
- NHS Pension Scheme
- Car Lease Scheme
- A professional, friendly and supportive culture
- Generous workplace benefits, including enhanced sickness, maternity & paternity entitlement

# How to apply:

If you are interested in applying to be a Health Care Assistant with GPS Healthcare, please submit your CV and a supporting statement outlining how you meet the essential criteria and why you are interested in the role to [humanresources.gps@nhs.net](mailto:humanresources.gps@nhs.net) by **16 November 2025**.

If you would be interested in finding out more about the role you can ask for an informal conversation with the Nursing Team. Please email [humanresources.gps@nhs.net](mailto:humanresources.gps@nhs.net) to arrange this.



# What can I expect if shortlisted:

If you are shortlisted and invited to attend for interview, the panel will be looking for evidence that your knowledge, skills and experience meet the criteria outlined within the Job Description and your suitability for the role.

We will use a number of assessment techniques throughout the process, these may include:

- Interview
- References

All interviews will take place at our Tanworth Lane Surgery.

Recruitment Timetable	
Closing date for applications	Sunday 16 November 2025
Shortlisting	TBC
Interviews to be held	TBC