

Candidate Information Pack Practice Nurse

October 2025



GPS Healthcare
General Practice Solihull

To provide high quality primary care services which improve the health and social care outcomes for the population of Solihull

Welcome to GPS Healthcare

I am really pleased that you are taking an interest in working with us at GPS Healthcare. I'm Simon Tunnicliffe, Managing Partner and I have been at GPS Healthcare since 2022, and I am proud to lead this great organisation.

Working in primary care is both challenging and rewarding. GPS Healthcare is on a journey of transformation in respect of how we deliver services to our patients. This is an exciting time to join us and we're looking forward to bringing new people along with us.

Our Vision matters: to deliver safe, effective and culturally responsive healthcare services, empowering individuals to thrive and communities to flourish.

As a Practice Nurse, you will be working alongside other fantastic nurses to deliver exceptional care to our patients. You will focus on supporting our patients to be healthy, assessing needs, providing nursing care and monitoring long term conditions. You will work collaboratively with the general practice team to meet the needs of the patients and support the delivery of policy and procedures.

GPS Healthcare is a single practice PCN with six sites based in central/south Solihull. We are rated 'Good' by the CQC and collaborate with key stakeholders within the Integrated Care System to focus on local health needs and population health and improve the delivery of primary care services at a locality level.

Good luck with your application.

Simon Tunnicliffe
Managing Partner



Simon Tunnicliffe
Managing Partner

Our Strategic Goals and Values:

Our Strategic Goals:

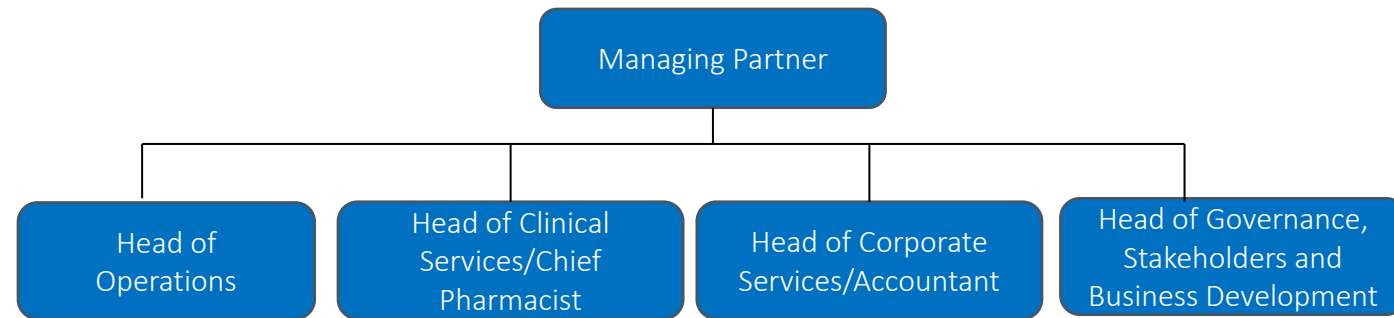
- Strengthen collaboration and communication.
- Develop proactive strategies to promote healthier lifestyles.
- Implement change based on feedback and evidence to meet established standards of excellence.

Our Values:

- Care
- Agile
- Respect
- Efficient

Our Structure:

Our Executive Team



What we are looking for:

We are looking for someone to provide autonomous leadership and be responsible for the care delivered to patients.

The post will be responsible for:

- Delivery of specialist clinics, evidence-based practice with long-term conditions, management and preventative nursing interventions to all our patients.
- Referrals to community-based services when needed.
- Supporting and managing the health needs of women presenting for family planning and cervical cytology consultations.
- Implement and participate in vaccination and immunisation programmes for both adults and children.
- Advise, support and where appropriate administer vaccinations for patients travelling abroad in conjunction with appropriate travel health advice.
- Review patient data to work with the nursing team, to achieve focused patient healthcare.
- Active participation in achieving QOF, UO and Enhanced Services targets and recall demands.
- Liaise with Operations team regarding new services that Practice Nurses can be involved with (depending on scope) and how this may be implemented.
- To support and develop junior staff and student nurses on placement.

Further information about the responsibilities of the role can be found in the full Practice Nurse Job description.

What experience is required?

- Nursing degree or equivalent
- Mandatory registration with Nursing and Midwifery Council
- Fundamentals of Practice Nursing diploma or equivalent
- Experience of Infection and Prevention Control management
- Experience of working in a Primary Care Nursing Team
- Experience of training junior colleagues and succession planning
- Experience of leading national initiatives / campaigns such as the Flu Campaign / COVID vaccinations

Full details about what is required for the role can be found in the Practice Nurse job description.

What we can offer:

- A professional, friendly and supportive workplace culture where your voice matters and development is encouraged.
- Competitive salary: £36,858 (£18.85 per hour) - £40,456 (£20.69 per hour) FTE – dependent on experience
- Flexible working options to support work life balance
- Membership of the NHS Pension Scheme
- Car Lease Scheme available to eligible employees
- A day off for your birthday because you deserve it!
- Access to our Employee Assistance Programme (EAP) for wellbeing and mental health support
- Generous workplace benefits, including enhanced sickness, maternity & paternity entitlement

How to apply:

If you are interested in applying to be the Practice Nurse with GPS Healthcare, please submit your CV and a supporting statement outlining how you meet the essential criteria and why you are interested in the role to humanresources.gps@nhs.net by **23 November 2025**.

If you would be interested in finding out more about the role you can ask for an informal conversation please email humanresources.gps@nhs.net to arrange this.

What can I expect if shortlisted:

If you are shortlisted and invited to attend for interview, the panel will be looking for evidence that your knowledge, skills and experience meet the criteria outlined within the Job Description and your suitability for the role.

We will use a number of assessment techniques throughout the process, these may include:

- Interview
- References

All interviews will take place at our Tanworth Lane Surgery.

Recruitment Timetable	
Closing date for applications	23 November 2025
Shortlisting	TBC
Interviews to be held	TBC