



**The Leeds
Teaching Hospitals**
NHS Trust



**LEEDS GP
CONFEDERATION**



**Forum
Central**

The collective voice for
the health and care
third sector in Leeds

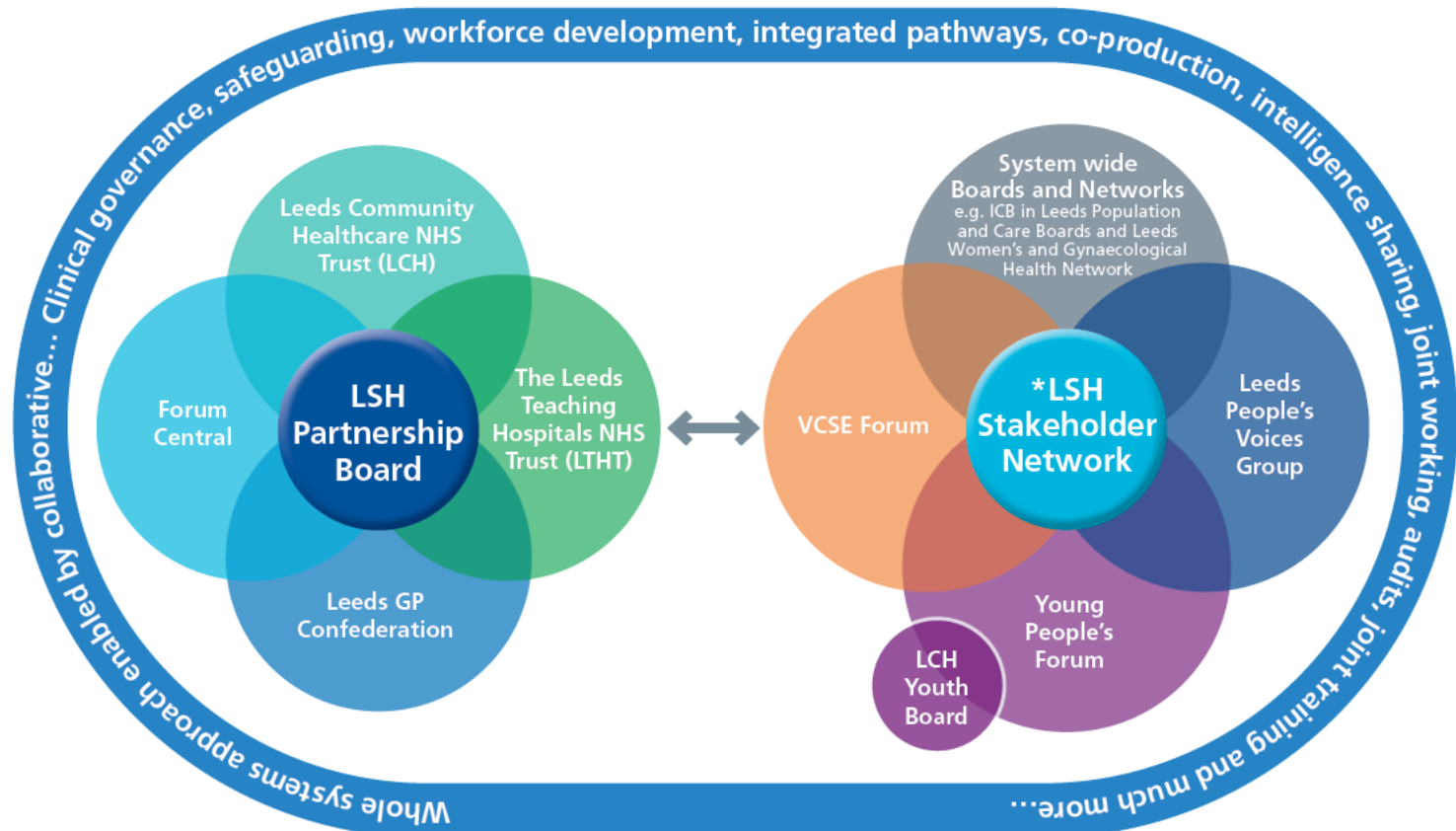


**Leeds Community
Healthcare**
NHS Trust

Confed Connects Leeds Sexual Health

New contract starting July 2024

Leeds Sexual Health Integrated Partnership Model



*As the consortium is the provider of many of the stakeholder services listed in the specification, we are able to guarantee representation. Where we are not e.g. NHSE and SARC we already have established relationships.

Whole system approach

How will you ensure that the service works effectively across the system to ensure equitable access to sexual health and reproductive services, particularly access to LARC

Phase 1 commenced 2nd January 2024 and has now concluded with service commencing on 1st July 2024
Focused workstreams: Workforce, Clinical Model (including LARC), Estates and Digitalisation

Phase 2 will run for 6 months from the commencement date.

- Includes digital hub, expanding the outreach offer and establishing a LSH Stakeholder Network.

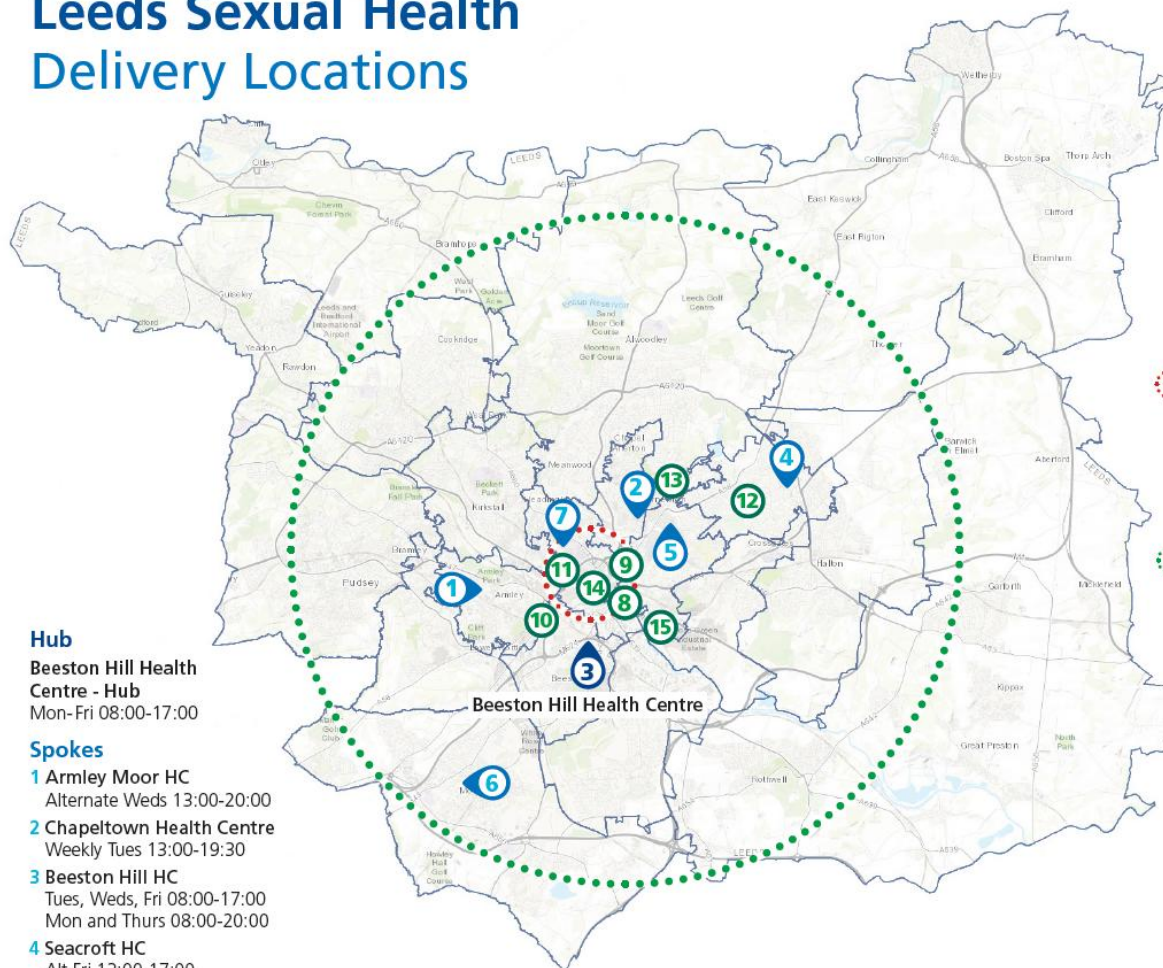
- Dedicated Mobilisation Project Manager
- Supported by BCDS, SBU Leadership, LSH leadership
- Identified leads for each workstream relevant to that specialism, E.g. digital workstream will be led by our Head of Clinical Systems
- Fortnightly Project meetings
- Report into LSH partnership board
- The LSH Partnership Board responsible for setting the direction, project planning and point of escalation of risks
- Regular meetings with commissioners

- New model designed to ensure speciality clinicians and consultants prioritise more complex work.
- Band 6 nurses will hold or be supported to attain dual training in Intermediate STIF and DFSRH. They will hold or work towards LoC SDI and non-medical prescribing.
- Band 7 CNS will be a non-medical prescriber & work towards Advanced STIF and LoC IUT training.
- Develop our workforce to incorporate primary care staffing, by working with the Leeds GP Confederation, to build resilience and increase our reach across the city.
- Increase level 1 and 2 delivery in primary care and VCSEs through training and workforce development, facilitated by Leeds GP Confederation and Forum Central.

New roles:

- Communications & Engagement Officer
- Clinical Nurse Specialists
- Care Navigators
- Forum Central Development Lead
- Head of Service Ops, Leeds GP Confederation

Leeds Sexual Health Delivery Locations



Hub

Beeston Hill Health Centre - Hub
Mon-Fri 08:00-17:00

Spokes

- 1 Armley Moor HC**
Alternate Weds 13:00-20:00
- 2 Chapeltown Health Centre**
Weekly Tues 13:00-19:30
- 3 Beeston Hill HC**
Tues, Weds, Fri 08:00-17:00
Mon and Thurs 08:00-20:00
- 4 Seacroft HC**
Alt Fri 13:00-17:00

Additional evening and weekend LARC Clinics

- 5 Milan Street**
Alternate Weds/Thurs 18:00-20:00
Weekly Fri 18:00-20:00
- 6 Windsor House Surgery**
Weekly Tues 18:00-20:00
- 7 Burley Park Health Centre**
Weekly Sun 09:00-13:00



City Offer

Market Place
Two days (times and days to be confirmed)

Gateway West GP Services
Sat 09:00-13:00 (start date to be confirmed)



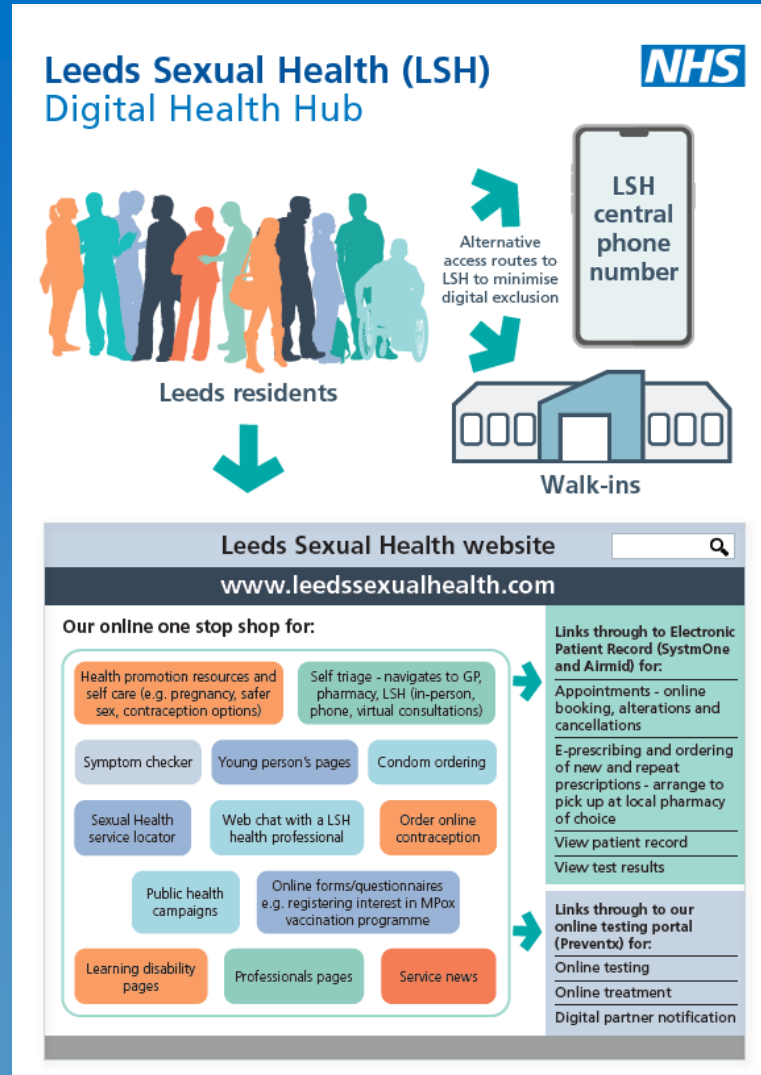
Outreach

Regular outreach points:

- 8 Mesmac**
 - 9 Basis**
 - 10 Joanna Project**
- Other outreach points:**
- 11 St George's Crypt**
 - 12 Getaway Girls**
 - 13 Francis House (Beacon Leeds)**
 - 14 Skyline**
 - 15 Leeds Gate**
 - Roma Groups
 - Universities
 - Colleges
 - Safe Project
 - Forward Leeds
 - Women's Health Matters
 - Futures

Our partnership of community, primary, secondary and VCSE providers gives us an unmatched estate footprint across the whole of Leeds, allowing us to flex our delivery locations to be in the localities of most need and when needed including evenings and weekends.

- Hub & Spoke Model
- Hub transferred from city centre in Merrion last week to Beeston
- Spokes in Armley, Chapeltown, Seacroft and city centre in Gateway West.
- Extended access LARC clinics with weekly appointments in Harehills Community Health Centre, Windsor House Surgery and Burley Park clinics
- City Centre satellite provision – The Market Place and Gateway West



- VCSE Forum led by Forum Central
- Build on existing partnerships with MESMAC, Joanna Project, BASIS and BHASkyline
- Sexual Health training programme to increase the ability of VCSEs to deliver sexual health advice in the communities they serve

Young People will be able to contact the service for advice and intervention via:

- Our central telephone number
- Our live chat advice service
- Online access for testing and contraception
- Online access to pre-book an appointment at Market Place
- By walking-in at the hub or spoke dedicated clinics young person clinic
- Young People Clinics will be held at a number of locations across Leeds including the city centre

- Establishment of a LSH Young Person's Forum.
- Website branding and layout which is attractive and user friendly for Young People.
- Dedicated Young People pages, which will be co-designed with the LCH Youth Board and other users of our current website.

- 51% of population
- Life course approach - menarche to menopause
- 75% primary care pre-COVID
- Contraception - fetal and maternal health, QoL, family health, societal, financial health
- LARC cost-effective (NICE)
- Non-contraceptive benefits

The Vision

- Take services back out to community
- Increase access
- ACCEPTIBILITY
- Evening/weekends - for service users with childcare or work commitments etc

GPC Leading on LARC service for LSH:

- Improved access to LARC Level 2 services
- Greater reach and greater presence across the city
- Taking services out into community
- Pooled resources
- Extended access by working with Leeds GPC and 3rd Sector
- Training – increased pool of trainers and training opportunities

- GPC leading, along with Leeds City Council on the LARC LES contract – SLA's have been circulated
- To maximise patient choice, there is a “Between Practice Referral Service” whereby a practice without LARC provision gets paid £10 for referring to an agreed provider of LARC who then inserts the LARC.
- Options remain to discuss with GPC about increasing LARC provision via EA which enable practices to keep the full ‘item of service’ fee for the practice but staffing paid for by the EA money – would need to be agreed at PCN level with the Confed.

Leeds – flagship model and exemplar of integrated community SRH

- Access – fair, equitable
- Treatment – standardised, working to high uniform clinical standards
- Processes
- SystmOne
- Booking

- LARC online booking
- SystmOne Connect
 - Online contraception
 - EHC

- Committed to increasing PrEP provision to all eligible patients. Focus beyond MSM to YP, women, trans and other high risk groups
- PrEP can be accessed via different modalities
 - Walk in, same day PrEP for <21 y, women, BM
 - Existing service users already taking PrEP can now request their medication online via e-consultation form on the website
 - Outreach PrEP at Mesmac to continue
 - Complex PrEP supported by Complex MDT
- Future plans
 - To look at offering PrEP within more discreet settings for those not wishing to attend the hub and spokes.

- Continue to use Preventx SHUK to deliver online sexual health screening
- Refine our current offer to work in line with Fast Track Cities
 - Targeted approach to online BBV screening
 - BBV screening offer to those at highest risk HIV, not only to MSM but also BAME groups at higher risk of late diagnosis
 - For those at high risk, but declining blood testing, pathways between Preventx and LSH to ensure service level follow up

- Improve pathways for treatment access for Chlamydia and Gonorrhoea (CT/GC)
- LSH e-consults for those with untreated asymptomatic Chlamydia + e-prescribing option for pick up at local pharmacy (pt choice)
- Chlamydia: for those in highest deprivation areas testing via SHUK, SHUK e-consultation, treatment and PN
- (LSH to be site of SEQUENCE, multi-centre research trial looking at e-consults for Chlamydia in 2024)
- **Partner Notification**
 - LSH Digital Partner Notification (PN) for patients with CT/GC via LSH clinicAdditional PN options:
 - Gonorrhoea: patients to have PN managed via SXT, a national platform allowing direct booking for partners into clinic for testing/treatment
 - Chlamydia: for those in highest deprivation areas testing via SHUK, Preventx can offer online PN + treatment



**The Leeds
Teaching Hospitals**
NHS Trust



**LEEDS GP
CONFEDERATION**



**Forum
Central**

The collective voice for
the health and care
third sector in Leeds

Delivered in partnership by:



**Leeds Community
Healthcare**
NHS Trust

Any Questions?